

LIGHTING SOLUTIONS

LED FIXTURES & CONTROLS

SIMPLY EIKO.



service. solutions. simplicity. eiko.com

IMPORTANT NOTICE

This catalog contains data accumulated up to the last update. Additional information is continually being uncovered through research and testing, which may modify the data given herein. This is particularly true of new fixtures and lamps. Accordingly, SPECIFICATIONS ARE SUBJECT TO CHANGE WITHOUT NOTICE.

The data and suggested applications contained in this catalog are for general information only and are not intended as representations or warranties as to the suitability of a product for any particular application or use in any particular equipment. Applications and conditions of use are many and varied, and beyond our control. We cannot have the same degree of knowledge that the purchaser has with respect to the design of their equipment and the conditions of its use. Therefore, it is up to the purchaser to determine the suitability of a lamp for their intended application or use and to assume the responsibility for that determination.

Information provided in the "Replace" column references the most common traditional lamp type replaced by the LED fixture or lamp in question. LED lighting products can replace many different traditional lamp types. For the most complete information, contact your EIKO representative.

EiKO wants to supply the best possible products at all times. For this reason, EiKO reserves the right to make changes to its products and to introduce new products or discontinue existing ones without notice.

US Shipping Terms and Conditions

CA Shipping Terms and Conditions

Warranty

US Contact

CA Contact

CONTENTS

WELCOME TO EIKO!	2
CONTROL READY PRODUCTS	3
ENHANCED PROJECT SOLUTIONS	4
LED FIXTURES	5
INDOOR FIXTURES	6
HIGH BAYS	6
LINEAR STRIPS	11
PANEL.....	14
TROFFER.....	15
WRAPS.....	16
DOWNLIGHT	17
DOWNLIGHT RETROFIT.....	19
RESIDENTIAL.....	20
TEMPORARY WORKING LIGHTS	22
OUTDOOR FIXTURES	23
AREA LIGHT.....	23
POLES/BRACKETS/ADAPTERS.....	25
SPORTS LIGHTER	27
FLOOD LIGHT.....	28
WALLPACK	29
GARAGE CANOPY	32
VAPOR TIGHT.....	33
EXIT / EMERGENCY.....	34
CONTROLS.....	35

WELCOME TO EIKO!



LIGHTING MADE EASY.

For over 45 years, we've been fulfilling the lighting needs of end-users in a wide variety of market segments by supplying a broad portfolio of value-engineered, high-quality lighting products.

We offer LED Fixtures, LED Lamps, Controls and Traditional Lighting products for indoor and outdoor applications which ensures when you partner with Eiko, you get the right solution for any application.

What sets us apart from the competition? We are dedicated to our key distribution partners by delivering on one promise, and one promise alone: to make lighting easy! That is what makes us Simply Eiko.

MARKET SEGMENTS



INDUSTRIAL



MULTIFAMILY



HOSPITALITY



RETAIL



PROPERTY MANAGEMENT



OFFICE



EXTERIOR



PARKING



EDUCATION

CONTROLS MADE EASY



STANDALONE



CONTROLS READY



NETWORKED

CONTROLS READY

EASILY ADD STANDALONE OR NETWORKED LIGHTING CONTROLS; NO WIRING REQUIRED

SELECTABLE PRODUCTS



POWERSET

CHOOSE FROM A RANGE OF WATTAGE AND LUMEN STOPS ON INSTALL



FIELDCCET

CHOOSE FROM A RANGE OF COLOR TEMPERATURES ON INSTALL

CONTROL READY PRODUCTS



EIKO MAKES ADDING CONTROLS EASY WITH CONTROL READY PRODUCTS. SIMPLY SCREW-IN, SNAP-IN OR TWIST LOCK THE STANDALONE OR NETWORKED LIGHTING CONTROL SOLUTION INTO THE INTEGRATED RECEPTACLE.

STANDALONE CONTROL SOLUTIONS



*COMMISSIONED USING COMMISSIONING TOOL.

NETWORKED LIGHTING CONTROL SOLUTIONS



*COMMISSIONED USING FREE SILVAIR APP AND IOS/ANDROID DEVICES. INTERNET CONNECTION REQUIRED ONLY DURING COMMISSIONING.

SCREW-IN



*IF USING A TWIST Z10 LOCK CONTROL SOLUTION, THE ADAPTER SENSA-APZ-WH IS REQUIRED.

SNAP-IN



TWIST LOCK Z10



EIKO'S PUSH-IN BEHIND THE LENS SENSOR IS A STANDALONE SOLUTION THAT OFFERS A PUSH IN DESIGN WITH 3 WIRED CONNECTIONS

PUSH-IN (BEHIND THE LENS)





ENHANCED PROJECT SOLUTIONS



FIXTURE MODIFICATIONS

15 days or less lead time 3rd Party Certification Approved

- | | | |
|------------------|---------------------|-------------------|
| Surge Protection | Modular Wiring Lens | Whips Cords Plugs |
| Battery Backup | Drivers ControlsMC | |

EXTENDED WARRANTIES

Customizable

Easy! Straight Forward! Nothing Hidden!

- 1, 5, 7 or 10 year Labor
- 7 or 10 year Parts

FINANCING & TAX SUPPORT

Simple Structure Turnkey

Seal the Deal w/customized Financing

TAX INCENTIVE SUPPORT

Expert assistance to maximize savings

Capitalized on extra tax incentives

PAYBACK CALCULATOR

Easy to Use

The Details you Need

24-7 Access @ eiko.com

- Updated w/ the most current rebated ROI and environment Impact
- Generate a Professional Proposal

REBATE FINDER

Info you Need all in One Place

24-7 Access @ eiko.com

- Real-time utility program information
- Real time Data including DLC Documentation
- Generate a Professional Proposal

LIGHTING LAYOUT SUPPORT

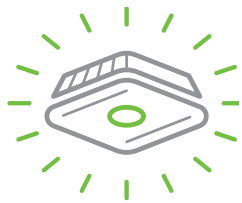
Free lighting layout support w/ layouts returned within 24 hours

24-7 Access @ eiko.com

- Indoor
- Outdoor



LED FIXTURES



EiKO offers LED fixture and retrofit kits to replace conventional lighting systems in both indoor and outdoor applications. Our full line of fixtures – including high bays, slim panels, troffers, strips, canopies, and downlight kits – can be customized to meet your market segment and application needs.



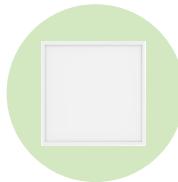
ROUND HIGH BAY



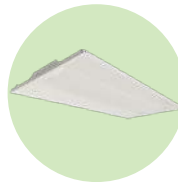
LINEAR HIGH BAY



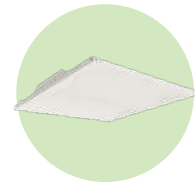
LINEAR STRIP



PANEL



TROFFER



LINEAR RETROFIT



LINEAR WRAP



DOWNLIGHT



DECORATIVE



WORKING LIGHT



AREA SITE LIGHT



POLES, BRACKETS & WALL ADAPTERS



SPORTS LIGHT



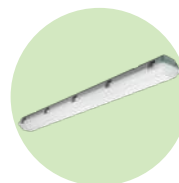
FLOOD LIGHT



WALLPACK



GARAGE & CANOPY



VAPOR TIGHT STRIP



EXIT/EMERGENCY



CONTROLS



BAYE3 Round High Bay

- Round high bay designed with performance and value in mind
- Controls Ready makes adding controls quick and easy. Includes screw-in receptacle for Standalone sensors or Networked Lighting Controls
- Includes extended length 10ft power and dimming cord and hook for easy installation
- Reflectors and mounting accessories available
- PowerSet feature allows for multiple lumen stops out of the box
- FieldCCeT features provides multiple color temperature settings in one fixture



HIGH BAYS

ORDER CODE	ITEM #	WATTS	CCT	LUMENS	EFFICACY (lm/W)	FINISH	TRADITIONAL WATTAGE EQUIVALENT	DLC ID #
								PREMIUM
13143	BAYE3-100-40-U	100W	4000K	15,000 lm	150 lm/W	Black	Up to 400W HID	S-JIW8Z9
13144	BAYE3-100-50-U	100W	5000K	15,000 lm	150 lm/W	Black	Up to 400W HID	S-A12FTK
13153	BAYE3-100-40-H	100W	4000K	15,000 lm	150 lm/W	Black	Up to 400W HID	S-5QC6DU
13154	BAYE3-100-50-H	100W	5000K	15,000 lm	150 lm/W	Black	Up to 400W HID	S-5M9I7L
13145	BAYE3-150-40-U	150W	4000K	22,500 lm	150 lm/W	Black	Up to 400W HID	S-WUMTY8
13146	BAYE3-150-50-U	150W	5000K	22,500 lm	150 lm/W	Black	Up to 400W HID	S-B1Y9MX
13155	BAYE3-150-40-H	150W	4000K	22,500 lm	150 lm/W	Black	Up to 400W HID	S-ELF9NX
13156	BAYE3-150-50-H	150W	5000K	22,500 lm	150 lm/W	Black	Up to 400W HID	S-G5DJNE
13163	BAYE3-PS150-FCCT-U	150/130/100W	3500/4000/5000K	22,500/19,500/15,000 lm	150 lm/W	Black	Up to 400W HID	S-Q8DPVZ
13164	BAYE3-PS150-FCCT-U-WH	150/130/100W	3500/4000/5000K	22,500/19,500/15,000 lm	150 lm/W	White	Up to 400W HID	S-Q8DPVZ
13167	BAYE3-PS150-FCCT-H	150/130/100W	3500/4000/5000K	22,500/19,500/15,000 lm	150 lm/W	Black	Up to 400W HID	S-Q8NL4P
13147	BAYE3-200-40-U	200W	4000K	30,000 lm	150 lm/W	Black	Up to 600W HID	S-61QZA7
13148	BAYE3-200-50-U	200W	5000K	30,000 lm	150 lm/W	Black	Up to 600W HID	S-FJ1ZSY
13157	BAYE3-200-40-H	200W	4000K	30,000 lm	150 lm/W	Black	Up to 600W HID	S-ZTWFSFA
13158	BAYE3-200-50-H	200W	5000K	30,000 lm	150 lm/W	Black	Up to 600W HID	S-ZK52LF
13149	BAYE3-240-40-U	240W	4000K	36,000 lm	150 lm/W	Black	Up to 750W HID	S-YJMGB3
13150	BAYE3-240-50-U	240W	5000K	36,000 lm	150 lm/W	Black	Up to 750W HID	S-OIBGME
13159	BAYE3-240-40-H	240W	4000K	36,000 lm	150 lm/W	Black	Up to 750W HID	S-76FBKS
13160	BAYE3-240-50-H	240W	5000K	36,000 lm	150 lm/W	Black	Up to 750W HID	S-X9Q7J3
13165	BAYE3-PS240-FCCT-U	240/200/180W	3500/4000/5000K	36,000/30,000/27,000 lm	150 lm/W	Black	Up to 750W HID	S-KRNJOY
13166	BAYE3-PS240-FCCT-U-WH	240/200/180W	3500/4000/5000K	36,000/30,000/27,000 lm	150 lm/W	White	Up to 750W HID	S-KRNJOY
13168	BAYE3-PS240-FCCT-H	240/200/180W	3500/4000/5000K	36,000/30,000/27,000 lm	150 lm/W	Black	Up to 750W HID	S-IFOAYQ
13151	BAYE3-300-40-U	300W	4000K	45,000 lm	150 lm/W	Black	Up to 1000W HID	S-XYA23C
13152	BAYE3-300-50-U	300W	5000K	45,000 lm	150 lm/W	Black	Up to 1000W HID	S-ZEHM09
13161	BAYE3-300-40-H	300W	4000K	45,000 lm	150 lm/W	Black	Up to 1000W HID	S-WQ6B2U
13162	BAYE3-300-50-H	300W	5000K	45,000 lm	150 lm/W	Black	Up to 1000W HID	S-8K90T2

ACCESSORIES

Voltage U: 120-277V, H: 120-347V



BAYE3-YK-S



BAYE3-YK-M



BAYE3-YK-L



REF1-PC-S



REF1-PC-M



REF1-PC-L



REF1-AL-S



REF1-AL-M



REF1-AL-L



WG1-S



WG1-M



WG1-L



REF1-CL



M10



12-NSF



PA-M10-34



PA-12-34



HBX3 Premium Round High Bay

- Premium round high bay with multiple configurable options to fit almost every application
- Controls Ready makes adding controls quick and easy. Includes screw-in receptacle for Standalone sensors or Networked Lighting Controls
- Field installed battery backup options
- Includes 10ft power and dimming cord and hook for mounting ease
- Hinged junction box for easy access to internal components
- Factory modification available for high temp applications (149°F/65°C)
- Prismatic and aluminum reflector and cone lens accessories available
- PowerSet feature allows for multiple lumen stops out of the box
- FieldCCeT features provides multiple color temperature settings in one fixture



HIGH BAYS

ORDER CODE	ITEM #	WATTS	CCT	LUMENS	EFFICACY (lm/W)	FINISH	TRADITIONAL WATTAGE EQUIVALENT (@MAX WATTS)	DLC ID#
								PREMIUM
13553	HBX3-150-50-U	150W	5000K	24,000 lm	160 lm/W	Black	Up to 400W HID	S-CVRA8J
13555	HBX3-PS150-40-U	150/130/100/80W	4000K	24,000/20,800/16,000/12,800 lm	160 lm/W	Black	6 lamp 4ft 32W T8 4 lamp 4ft 54W T5 400W HID	S-60NOMZ
13556	HBX3-PS150-50-U	150/130/100/80W	5000K	24,000/20,800/16,000/12,800 lm	160 lm/W	Black	6 lamp 4ft 32W T8 4 lamp 4ft 54W T5 400W HID	S-6PIFHT
13561	HBX3-PS150-40-V	150/130/100/80W	4000K	24,000/20,800/16,000/12,800 lm	160 lm/W	Black	6 lamp 4ft 32W T8 4 lamp 4ft 54W T5 400W HID	S-NSOZEX
13562	HBX3-PS150-50-V	150/130/100/80W	5000K	24,000/20,800/16,000/12,800 lm	160 lm/W	Black	6 lamp 4ft 32W T8 4 lamp 4ft 54W T5 400W HID	S-B13EZQ
13567	HBX3-PS150-FCCT-H	150/130/100/80W	4000/5000K	24,000/20,800/16,000/12,800 lm	160 lm/W	Black	6 lamp 4ft 32W T8 4 lamp 4ft 54W T5 400W HID	S-FLH9X8
13568	HBX3-PS150-FCCT-H-WH	150/130/100/80W	4000/5000K	24,000/20,800/16,000/12,800 lm	160 lm/W	White	6 lamp 4ft 32W T8 4 lamp 4ft 54W T5 400W HID	S-FLH9X8
13554	HBX3-200-50-U	200W	5000K	34,000 lm	160 lm/W	Black	Up to 600W HID	S-B6GY8W
13557	HBX3-PS240-40-U	240/220/200/180W	4000K	38,400/35,200/32,000/28,800 lm	160 lm/W	Black	6 lamp 4ft 32W T8 4 lamp 4ft 54W T5 400W HID	S-12BMOU
13558	HBX3-PS240-50-U	240/220/200/180W	5000K	38,400/35,200/32,000/28,800 lm	160 lm/W	Black	6 lamp 4ft 32W T8 4 lamp 4ft 54W T5 400W HID	S-1IXQ9D
13563	HBX3-PS240-40-V	240/220/200/180W	4000K	38,400/35,200/32,000/28,800 lm	160 lm/W	Black	6 lamp T5 HO 750W HID	S-25EGAB
13564	HBX3-PS240-50-V	240/220/200/180W	5000K	38,400/35,200/32,000/28,800 lm	160 lm/W	Black	6 lamp T5 HO 750W HID	S-NFJ5AR
13569	HBX3-PS240-FCCT-H	240/220/200/180W	4000/5000K	38,400/35,200/32,000/28,800 lm	160 lm/W	Black	6 lamp T5 HO 750W HID	S-423YB5
13570	HBX3-PS240-FCCT-H-WH	240/220/200/180W	4000/5000K	38,400/35,200/32,000/28,800 lm	160 lm/W	White	6 lamp T5 HO 750W HID	S-423YB5
13559	HBX3-PS300-40-U	300/285/270/255W	4000K	48,000/45,600/43,200/40,800 lm	160 lm/W	Black	1000W HID	S-3OV8PE
13560	HBX3-PS300-50-U	300/285/270/255W	5000K	48,000/45,600/43,200/40,800 lm	160 lm/W	Black	1000W HID	S-CKO87T
13565	HBX3-PS300-40-V	300/285/270/255W	4000K	48,000/45,600/43,200/40,800 lm	160 lm/W	Black	1000W HID	S-ME91H
13566	HBX3-PS300-50-V	300/285/270/255W	5000K	48,000/45,600/43,200/40,800 lm	160 lm/W	Black	1000W HID	S-074YEN

Voltage U: 120-277V, V: 277-480V, H: 120-347V

ACCESSORIES



REF1-PC-S



REF1-PC-M



REF1-AL-S



REF1-AL-M



WG1-S



WG1-M



REF1-CL



PA-12-34



LH1 Linear High Bay

- Die-cast aluminum style with molded heat-sink fins for enhanced performance
- Controls Ready makes adding controls quick and easy. Includes screw-in receptacle for Standalone sensors or Networked Lighting Controls
- Field and factory install backup battery options
- Frosted polycarbonate lens eliminates glare
- Suggested mounting heights are up to 35'
- V-Hook and Aircraft Cables (6.5) included
- 120-347V Comes with External 10' cord (no plug)
- PowerSet feature allows for multiple lumen stops out of the box
- FieldCCeT features provides multiple color temperature settings in one fixture



ORDER CODE	ITEM #	WATTS	CCT	LUMENS	EFFICACY (lm/W)	TRADITIONAL WATTAGE EQUIVALENT	DLC ID #
							PREMIUM
13399	LH1-090-40-U	90W	4000K	13,500 lm	150 lm/W	4-Lamp 4 Foot T8/T12, up to 250W HID	S-0G09HZ
13402	LH1-090-50-U	90W	5000K	13,500 lm	150 lm/W	4-Lamp 4 Foot T8/T12, up to 250W HID	S-2I4GTL
13401	LH1-090-40-V	90W	4000K	13,500 lm	150 lm/W	4-Lamp 4 Foot T8/T12, up to 250W HID	S-1H2X96
13404	LH1-090-50-V	90W	5000K	13,500 lm	150 lm/W	4-Lamp 4 Foot T8/T12, up to 250W HID	S-2MFDA6
13400	LH1-090-40-H	90W	4000K	13,500 lm	150 lm/W	4-Lamp 4 Foot T8/T12, up to 250W HID	S-06XSM8
13403	LH1-090-50-H	90W	5000K	13,500 lm	150 lm/W	4-Lamp 4 Foot T8/T12, up to 250W HID	S-1TYC0Z
13405	LH1-130-40-U	130W	4000K	19,500 lm	150 lm/W	6 lamp 32W T8 or 4 lamp T5 HO or up to 400W HID	S-5Z297R
13408	LH1-130-50-U	130W	5000K	19,500 lm	150 lm/W	6 lamp 32W T8 or 4 lamp T5 HO or up to 400W HID	S-6LMAYV
13407	LH1-130-40-V	130W	4000K	19,500 lm	150 lm/W	6 lamp 32W T8 or 4 lamp T5 HO or up to 400W HID	S-5X0B8S
13418	LH1-130-50-V	130W	5000K	19,500 lm	150 lm/W	6 lamp 32W T8 or 4 lamp T5 HO or up to 400W HID	S-6MC1XH
13406	LH1-130-40-H	130W	4000K	19,500 lm	150 lm/W	6 lamp 32W T8 or 4 lamp T5 HO or up to 400W HID	S-528GIL
13409	LH1-130-50-H	130W	5000K	19,500 lm	150 lm/W	6 lamp 32W T8 or 4 lamp T5 HO or up to 400W HID	S-6CGSFV
13419	LH1-160-40-U	160W	4000K	24,000 lm	150 lm/W	6 lamp 32W T8 or 4 lamp T5 HO or up to 400W HID	S-A90X8I
13422	LH1-160-50-U	160W	5000K	24,000 lm	150 lm/W	6 lamp 32W T8 or 4 lamp T5 HO or up to 400W HID	S-AXHMF3
13421	LH1-160-40-V	160W	4000K	24,000 lm	150 lm/W	6 lamp 32W T8 or 4 lamp T5 HO or up to 400W HID	S-AWCZVT
13424	LH1-160-50-V	160W	5000K	24,000 lm	150 lm/W	6 lamp 32W T8 or 4 lamp T5 HO or up to 400W HID	S-C1RIYP
13420	LH1-160-40-H	160W	4000K	24,000 lm	150 lm/W	6 lamp 32W T8 or 4 lamp T5 HO or up to 400W HID	S-A3PJLR
13423	LH1-160-50-H	160W	5000K	24,000 lm	150 lm/W	6 lamp 32W T8 or 4 lamp T5 HO or up to 400W HID	S-AWJQHI
13431	LH1-PS160-FCCT-U	160/130/110/90W	4000/5000K	24,000/19,500/16,500/13,500 lm	150 lm/W	6 lamp 32W T8 or 4 lamp T5 HO or up to 400W HID	S-QATL9J
13425	LH1-200-40-U	200W	4000K	30,000 lm	150 lm/W	6 lamp T5 HO or up to 600W HID	S-D7VUX1
13428	LH1-200-50-U	200W	5000K	30,000 lm	150 lm/W	6 lamp T5 HO or up to 600W HID	S-HCEBJS
13427	LH1-200-40-V	200W	4000K	30,000 lm	150 lm/W	6 lamp T5 HO or up to 600W HID	S-EPIDNC
13430	LH1-200-50-V	200W	5000K	30,000 lm	150 lm/W	6 lamp T5 HO or up to 600W HID	S-HNFC6K
13426	LH1-200-40-H	200W	4000K	30,000 lm	150 lm/W	6 lamp T5 HO or up to 600W HID	S-Y6L9RE
13429	LH1-200-50-H	200W	5000K	30,000 lm	150 lm/W	6 lamp T5 HO or up to 600W HID	S-SO1W4J
13507	LH1-240-40-U	240W	4000K	36,000 lm	150 lm/W	6 lamp T5 HO or up to 750W HID	S-KI5QO1
13510	LH1-240-50-U	240W	5000K	36,000 lm	150 lm/W	6 lamp T5 HO or up to 750W HID	S-LH7TAI
13509	LH1-240-40-V	240W	4000K	36,000 lm	150 lm/W	6 lamp T5 HO or up to 600W HID	S-KMSV5G
13512	LH1-240-50-V	240W	5000K	36,000 lm	150 lm/W	6 lamp T5 HO or up to 600W HID	S-NQ04WI
13508	LH1-240-40-H	240W	4000K	36,000 lm	150 lm/W	6 lamp T5 HO or up to 750W HID	S-J2W7HP
13511	LH1-240-50-H	240W	5000K	36,000 lm	150 lm/W	6 lamp T5 HO or up to 750W HID	S-L32F5S
13432	LH1-PS240-FCCT-U	240/220/200/180W	4000/5000K	36,000/33,000/30,000/27,000 lm	150 lm/W	6 lamp T5 HO or up to 750W HID	S-S4Q5FY
13433	LH1-PS320-40-U	320/300/280/260W	4000K	48,000/45,000/42,000/39,000 lm	150 lm/W	6 lamp T5 HO or up to 1000W HID	S-SO1W4J
13435	LH1-PS320-50-U	320/300/280/260W	5000K	48000/45,000/42,000/39,000 lm	150 lm/W	6 lamp T5 HO or up to 1000W HID	S-UD7NGH
13434	LH1-PS320-40-V	320/300/280/260W	4000K	48,000/45,000/42,000/39,000 lm	150 lm/W	6 lamp T5 HO or up to 1000W HID	S-T4P75J

Voltage U: 120-277V, V: 277-480V, H: 120-347V



LH1 Linear High Bay Cont'd

ORDER CODE	ITEM #	WATTS	CCT	LUMENS	EFFICACY (lm/W)	TRADITIONAL WATTAGE EQUIVALENT	DLC ID #
							PREMIUM
13436	LH1-PS320-50-V	320/300/280/260W	5000K	48,000/45,000/42,000/39,000 lm	150 lm/W	6 lamp T5 HO or up to 1000W HID	S-UGO6CY
13437	LH1-PS440-40-U	440/400/380/360W	4000K	66,000/60,000/57,000/54,000 lm	150 lm/W	6 lamp T5 HO or up to 1000W HID	S-W7LVTO
13439	LH1-PS440-50-U	440/400/380/360W	5000K	66,000/60,000/57,000/54,000 lm	150 lm/W	6 lamp T5 HO or up to 1000W HID	S-Y0JH19
13438	LH1-PS440-40-V	440/400/380/360W	4000K	66,000/60,000/57,000/54,000 lm	150 lm/W	6 lamp T5 HO or up to 1000W HID	S-WNI7BC
13440	LH1-PS440-50-V	440/400/380/360W	5000K	66,000/60,000/57,000/54,000 lm	150 lm/W	6 lamp T5 HO or up to 1000W HID	S-Y5QX09

Voltage U: 120-277V, V: 277-480V, H: 120-347V

LHC1 Compact Linear High Bay

- Easy one person installation with lightweight compact design
- Die-cast aluminum style with molded heat-sink fins for enhanced performance and heat dissipation
- PowerSet feature allows for multiple lumen stops out of the box
- Controls Ready makes adding controls quick and easy. Includes screw-in receptacle for Standalone sensors or Networked Lighting Controls

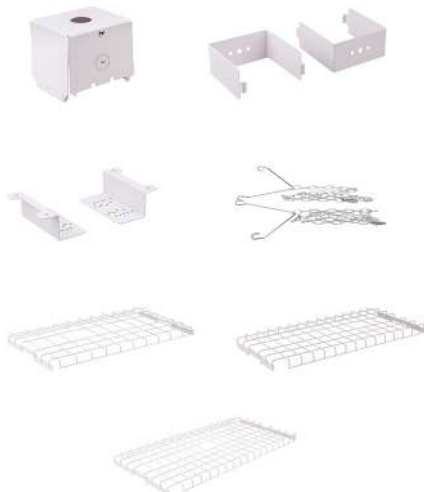


ORDER CODE	ITEM #	WATTS	CCT	LUMENS	EFFICACY (lm/W)	TRADITIONAL WATTAGE EQUIVALENT (@90W)	TRADITIONAL WATTAGE EQUIVALENT (@150W)	DLC ID#
								PREMIUM
13141	LHC1-PS150-40-U	150/130/110/90W	4000K	21,000/18,200/15,400/12,600 lm	140 lm/W	4 lamp 4ft 32W T8 250W HID	6 lamp 4ft 32W T8 4 lamp 4ft 54W T5 400W HID	S-X0G6Y4
13142	LHC1-PS150-50-U	150/130/110/90W	5000K	21,000/18,200/15,400/12,600 lm	140 lm/W	4 lamp 4ft 32W T8 250W HID	6 lamp 4ft 32W T8 4 lamp 4ft 54W T5 400W HID	S-LGRMFE

Voltage U: 120-277V

ACCESSORIES

LH1



LHC1



WANT TO ADD CONTROLS? EIKO MAKES IT EASY!



REMOVE COVER USING PHILLIPS SCREWDRIVER

SCREW-IN THE CONTROL SOLUTION





LLH-DX Linear High Bay

- 135 lm/W ultra-high efficiency delivers superior performance over fluorescent and HID, saving up 60% of energy cost
- Universal 0-10V driver for continuous dimming
- Optional Z10 receptacle simplifies adding controls



ORDER CODE	ITEM #	SIZE	WATTS	CCT	LUMENS	EFFICACY (lm/W)	LENS	DIMMING	REPLACES	DLC ID#
										PREMIUM
11340	LLH-06DX-40K-U	2'	65W	4000K	8800 lm	135 lm/W	Frosted	0-10V	HBF 6x T8/4x T5	pending
11341	LLH-06DX-50K-U	2'	65W	5000K	8800 lm	135 lm/W	Frosted	0-10V	HBF 6x T8/4x T5	pending
11342	LLH-1DX-40K-U	2'	110W	4000K	14,950 lm	135 lm/W	Frosted	0-10V	HBF 6x T8/4x T5	pending
11343	LLH-1DX-50K-U	2'	110W	5000K	14,950 lm	135 lm/W	Frosted	0-10V	HBF 6x T8/4x T5	pending
11344	LLH-2DX-40K-U	2'	162W	4000K	21,850 lm	135 lm/W	Frosted	0-10V	HBF 8x T8/6x T5 HO	pending
11345	LLH-2DX-50K-U	2'	162W	5000K	21,850 lm	135 lm/W	Frosted	0-10V	HBF 8x T8/6x T5 HO	pending
11346	LLH-3DX-40K-U	2'	223W	4000K	30,300 lm	135 lm/W	Frosted	0-10V	8x T5 HO	pending
11347	LLH-3DX-50K-U	2'	223W	5000K	30,300 lm	135 lm/W	Frosted	0-10V	8x T5 HO	pending
11348	LLH-4DX-40K-U	4'	265W	4000K	36,000 lm	135 lm/W	Frosted	0-10V	10x T5 HO	pending
11349	LLH-4DX-50K-U	4'	265W	5000K	36,000 lm	135 lm/W	Frosted	0-10V	10x T5 HO	pending
11350	LLH-5DX-40K-U	4'	321W	4000K	43,650 lm	135 lm/W	Frosted	0-10V	1000W HID	pending
11351	LLH-5DX-50K-U	4'	321W	5000K	43,650 lm	135 lm/W	Frosted	0-10V	1000W HID	pending
11352	LLH-7DX-40K-U	4'	425W	4000K	57,800 lm	135 lm/W	Frosted	0-10V	1000W HID	pending
11353	LLH-7DX-50K-U	4'	425W	5000K	57,800 lm	135 lm/W	Frosted	0-10V	1000W HID	pending

Voltage U: 120-277V

VPHB1 Vapor Proof High Bay

- Designed to be used in environments subject to high levels of moisture and dust
- Multiple knockouts make installation flexible and easy
- Stainless steel clips
- Cable gland included for sealing power cable entry, knockout plug accessory available
- Frosted polycarbonate lens eliminates glare
- Surface or chain mount



ORDER CODE	ITEM #	SIZE	WATTS	CCT	LUMENS	EFFICACY (lm/W)	TRADITIONAL WATTAGE EQUIVALENT	DLC ID #
								PREMIUM
13125	VPHB1-41504-3	4'	150W	4000K	19,848 lm	132 lm/W	6 lamp 32W T8 or 4 lamp T5 HO	PEF9J9QO
13126	VPHB1-41505-3	4'	150W	5000K	20,223lm	133 lm/W	6 lamp 32W T8 or 4 lamp T5 HO	PNFEARSM
313971	VPHB1-42004-3	4'	200W	4000K	30,392 lm	147 lm/W	6 lamp T5 HO	PT1CAW6T
800249	VPHB1-42005-3	4'	200W	5000K	31,259 lm	150 lm/W	6 lamp T5 HO	PZVCSF53

Voltage: 120-347V

TRH Tube Ready High Bay

- Tube Ready High Bay fixtures are pre-wired for double ended line voltage LED tubes (Type B) or double ended LED tubes (Type C) driver not included.
- These fixtures coupled with Eiko's LED tubes provide maximum ROI and customization.



ORDER CODE	ITEM #	SIZE	# OF LAMPS	MAX WATTAGE PER LAMP
11212	TRH4-44T8DE	4'	4	17W
11213	TRH4-64T8DE	4'	6	17W
11214	TRH4-84T8DE	4'	8	17W
11215	TRH4-44T5DE	4'	4	25W

Voltage: Lamp Dependent



CST1 Commercial Strip

- Performance commercial strip designed with value in mind
- Unique push button access allows for the lens and LED board to be easily removed, allowing quick access to driver
- Easily add a behind the lens standalone control solution; minimal wiring required
- Available in 4' and 8' lengths
- 2 x 1/2" knockouts on each end
- Linear alignment plate accessory makes row mounting quick and easy (surface and suspension alignment plates available)
- V-Hooks included with fixture



ORDER CODE	ITEM #	SIZE	WATTS	CCT	LUMENS	EFFICACY (lm/W)	TRADITIONAL WATTAGE EQUIVALENT	DLC ID#	
								STANDARD	PREMIUM
13412	CST1-432-40-U	4'	32W	4000K	4160 lm	130 lm/W	2 lamp 32W T8	S-6FNU4R	
13413	CST1-432-50-U	4'	32W	5000K	4160 lm	130 lm/W	2 lamp 32W T8	S-DW40FA	
13414	CST1-864-40-U	8'	64W	4000K	8320 lm	130 lm/W	2 lamp 96W T8 / 4 lamp 32W T8	S-CF5Y2M	
13415	CST1-864-50-U	8'	64W	5000K	8320 lm	130 lm/W	2 lamp 96W T8 / 4 lamp 32W T8	S-8KA9Q2	

Voltage U: 120-277V

CSX1 Commercial Strip Premium

- Diecast aluminum style with molded heatsink fins for enhanced performance
- Controls Ready makes adding controls quick and easy. Includes screw-in receptacle for Standalone sensors or Networked Lighting Controls
- Field and factory install backup battery options
- Frosted polycarbonate lens eliminates glare
- Suggested mounting heights are up to 35'
- V-Hook and Aircraft Cables (6.5') included
- 120-347V Comes with External 10' cord (no plug)
- PowerSet feature allows for multiple lumen stops out of the box
- FieldCCeT features provides multiple color temperature settings in one fixture



ORDER CODE	ITEM #	SIZE	WATTS	CCT	LUMENS	EFFICACY (lm/W)	TRADITIONAL WATTAGE EQUIVALENT	DLC ID#	
								STANDARD	PREMIUM
13632	CSX1-2PS25-FCCT-H	2'	25/20/15W	3500/4000/5000K	3250/2600/1950 lm	130 lm/W	2 lamp 17W T8	S-ZNW69S	S-BYZ6UK
13780	CSX1-4PS45-40-H	4'	45/35/26W	4000K	5850/4550/3380 lm	130 lm/W	2 lamp 32W T8	S-URS9OE	S-VCMO68
13628	CSX1-4PS45-40-U	4'	45/35/26W	4000K	5850/4550/3380 lm	130 lm/W	2 lamp 32W T8	S-0T7MIP	S-NEWO14
13629	CSX1-4PS45-50-U	4'	45/35/26W	5000K	5850/4550/3380 lm	130 lm/W	2 lamp 32W T8	S-D2X8AQ	S-BQMNSU
13634	CSX1-4PS45-FCCT-H	4'	45/35/26W	3500/4000/5000K	5850/4550/3380 lm	130 lm/W	2 lamp 32W T8	S-EZ0K3C	S-QMUTEV
13633	CSX1-4PS45-FCCT-U	4'	45/35/26W	3500/4000/5000K	5850/4550/3380 lm	130 lm/W	2 lamp 32W T8	S-AX2C1O	S-XL3CYE
13636	CSX1-4PS65-FCCT-H	4'	65/60/55W	3500/4000/5000K	8450/7800/7150 lm	130 lm/W	2 lamp 60W T8/4 lamp 32W T8	S-QDZL5E	S-3AFBS0
13635	CSX1-4PS65-FCCT-U	4'	65/60/55W	3500/4000/5000K	8450/7800/7150 lm	130 lm/W	2 lamp 60W T8/4 lamp 32W T8	S-6UTFZD	S-VWQRZF
13782	CSX1-8PS90-40-H	8'	90/75/65W	4000K	11,700/9750/8450 lm	130 lm/W	2 lamp 96W T8/4 lamp 60W T8	S-3DIO2V	S-5C342F
13630	CSX1-8PS90-40-U	8'	90/75/65W	4000K	11,700/9750/8450 lm	130 lm/W	2 lamp 96W T8/4 lamp 60W T8	S-G6EHDH	S-WC74VL
13631	CSX1-8PS90-50-U	8'	90/75/65W	5000K	11,700/9750/8450 lm	130 lm/W	2 lamp 96W T8/4 lamp 60W T8	S-9IOZCV	S-I3PMA4
13638	CSX1-8PS90-FCCT-H	8'	90/75/65W	3500/4000/5000K	11,700/9750/8450 lm	130 lm/W	2 lamp 96W T8/4 lamp 60W T8	S-G0M3ZH	S-L4BIEF
13637	CSX1-8PS90-FCCT-U	8'	90/75/65W	3500/4000/5000K	11,700/9750/8450 lm	130 lm/W	2 lamp 96W T8/4 lamp 60W T8	S-YRT3K4	S-POQN0A

Voltage U: 120-277V, H: 120-347V



LS3 Linear/Under Cabinet Strip

- Low profile solution for any cove or under cabinet project
- Linkable double ended connector included to make end to end connections
- Surface mounting hardware included
- Frosted polycarbonate lens eliminates glare
- On/Off switch available on each model except 3W
- T5 shape for retrofit applications
- Available in 10", 14", 23", 35" and 47" lengths
- LS3-JBS or LS3-PC6 required to power LS3 fixtures. Sold Separately
- PowerSet feature allows for multiple lumen stops out of the box
- FieldCCeT features provides five color temperature settings in one fixture



ORDER CODE	ITEM #	SIZE	WATTS	CCT	LUMENS	EFFICACY (lm/W)	TRADITIONAL WATTAGE EQUIVALENT
13810	LS3-103-FCCT	10"	3W	27/30/35/40/5000K	330 lm	110 lm/W	9" 6W T5
13811	LS3-145-FCCT	14"	5W	27/30/35/40/5000K	550 lm	110 lm/W	12" 8W T5
13812	LS3-PS239-FCCT	23"	9/7/5W	27/30/35/40/5000K	990/770/550 lm	110 lm/W	22" 14W T5 HE
13813	LS3-PS3514-FCCT	35"	14/12/10W	27/30/35/40/5000K	1540/1320/1100 lm	110 lm/W	34" 21W T5 HE
13814	LS3-PS4718-FCCT	47"	18/15/12W	27/30/35/40/5000K	1980/1650/1320 lm	110 lm/W	46" 28W T5 HE

Voltage: 120V

ACCESSORIES

POWER CORDS

LS3-CON06



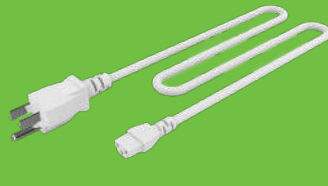
LS3-CON12



LS3-CON36



LS3-PC6



J-BOXES

LS3-JB

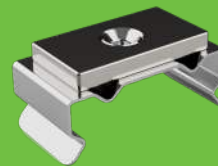


LS3-JBS

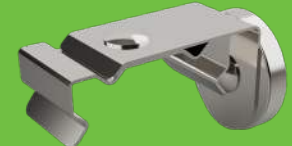


MOUNTING CLIPS

LS3-MAGCLIP



LS3-MAG



The **LS3-Series Linear Strip** is a triac dimmable, low profile solution for any cove or undercabinet project.

Connect up to 300W (non-dimming) or 150W (dimming).

J-box or Power cord required.



TRS Tube Ready Strip

Tube Ready Strips are designed for maximum flexibility, pre-wired for double ended line voltage LED tubes (Type B) and external driver double ended LED tubes (Type C). These fixtures, coupled with our LED retrofit tubes, provide the end-user with the ability to address their specific needs with maximum ROI: low costs, ease of maintenance, energy savings, and low installation times.



ORDER CODE	ITEM #	SIZE	# OF LAMPS	MAX WATTAGE PER LAMP
11237	TRS2-22T8DE	2'	2	10W
10580	TRS4-14DE	4'	1	22W
10587	TRS4-24DE	4'	2	22W
10592	TRS8-44DE	8'	4	22W
11238	TRS4-14T5DE	4'	1	25W
11239	TRS4-24T5DE	4'	2	25W

Voltage: Lamp Dependent

STR Linear Strip

- Available in 2ft, 4ft, and 8ft versions
- One for one alternative LED solution to fluorescent strip luminaires
- Continuous dimming to 10%
- PowerSet feature allows for multiple "set and forget" lumens stops in each fixture
- FieldCCeT feature allows for multiple "set and forget" CCT options in each fixture



ORDER CODE	ITEM #	SIZE	WATTS	CCT	LUMENS	CRI	DIMMING	DLC STANDARD	
								DIRECT LINEAR AMBIENT LUMINAIRES	HIGH-BAY LUMINAIRES FOR COMMERCIAL AND INDUSTRIAL BUILDINGS
11316	STR2/PS24/835/UD	2'	24W/20W/16W	3500K	3100/2600/2100	80+	0-10V	P7HR81U2	N/A
11317	STR2/PS24/840/UD	2'	24W/20W/16W	4000K	3100/2600/2100	80+	0-10V	PY1GIIPQ	N/A
11318	STR2/PS24/850/UD	2'	24W/20W/16W	5000K	3100/2600/2100	80+	0-10V	PSPWUJZK	N/A
11016	STR4/PS45/835/UD	4'	45W/38W/34W	3500K	6000/5100/4650	80+	0-10V	P9LL10D9	P4L8Y2EW
11017	STR4/PS45/840/UD	4'	45W/38W/34W	4000K	6000/5100/4650	80+	0-10V	PQYGPCSY	PJ451HNC
11018	STR4/PS45/850/UD	4'	45W/38W/34W	5000K	6000/5100/4650	80+	0-10V	P15WKYSJ	P65VVJ3K
11019	STR4/PS24/FCCT/UD	4'	45W/38W/34W	35/40/5000K	6000/5100/4650	80+	0-10V	PP9404CK	PNGZ5AHY
11020	STR8/PS90/835/UD	8'	90W/75W/65W	3500K	11,800/10,100/9000	80+	0-10V	PYU1T5SY	P2DXSVRI
11021	STR8/PS90/840/UD	8'	90W/75W/65W	4000K	11,800/10,100/9000	80+	0-10V	PPCUH8A4	PD5849B4
11022	STR8/PS90/850/UD	8'	90W/75W/65W	5000K	11,800/10,100/9000	80+	0-10V	PJ6JYP3G	POOVDPLO
11023	STR8/PS90/FCCT/UD	8'	90W/75W/65W	35/40/5000K	11,800/10,100/9000	80+	0-10V	P92FUMC3	PUH6BAVQ

Voltage U: 120-277

STR-R Linear Strip Retrofit

- Designed for easy installation on existing fluorescent strip fixtures, providing a quick update to the latest in LED performance without the need for all-new fixtures
- Available for 4' and 8' applications
- Designed for fixtures between 4.25" and 5.25" wide
- Up to 50% energy savings over fluorescent fixtures
- Up to 130 LPW
- PowerSet feature allows for multiple "set and forget" lumen stops in each fixture
- FieldCCeT feature allows for multiple "set and forget" CCT options in each fixture



ORDER CODE	ITEM #	SIZE	WATTS	CCT	LUMENS	EFFICACY (lm/W)	CRI	DIMMING	DLC ID#
									STANDARD
11362	STR4R/PS44/835/UD	4'	44/35/27/22W	3500K	5850/4550/3500/2850 lm	130 lm/W	>80	0-10V	PP4W25PL
11363	STR4R/PS44/840/UD	4'	44/35/27/22W	4000K	5850/4550/3500/2850 lm	130 lm/W	>80	0-10V	PB691L52
11364	STR4R/PS44/FCCT/UD	4'	44/35/27/22W	35/40/5000K	5850/4550/3500/2850 lm	130 lm/W	>80	0-10V	PL10DLH0
11365	STR4R/PS44/FCCT/HD	4'	44/35/27/22W	35/40/5000K	5850/4550/3500/2850 lm	130 lm/W	>80	0-10V	PTFA68IG
11366	STR8R/PS88/835/UD	8'	88/68/54W	3500K	11,400/8800/7000 lm	130 lm/W	>80	0-10V	PUHZ9WOL
11367	STR8R/PS88/840/UD	8'	88/68/54W	4000K	11,400/8800/7000 lm	130 lm/W	>80	0-10V	PJGJY6FP
11368	STR8R/PS88/FCCT/UD	8'	88/68/54W	35/40/5000K	11,400/8800/7000 lm	130 lm/W	>80	0-10V	P1XGWOU1

Voltage U: 120-277, H: 120-347V



BP1 Backlit Flat Panel

- Low profile design is ideal for shallow plenum spaces
- Backlit design provides direct light and does not require a light guide plate
- The use of a high-quality, non-yellowing PMMA diffuse lens ensures optimal light uniformity
- Lightweight design makes it easier and faster to install
- Available in 1'x4', 2'x2' and 2'x4' sizes
- Compatible with networked lighting controls (-12 Models)
- PowerSet feature allows for multiple lumen stops out of the box
- FieldCCeT features provides multiple color temperature settings in one fixture



ORDER CODE	ITEM #	SIZE	WATTS	CCT	LUMENS	EFFICACY (lm/W)	TRADITIONAL WATTAGE EQUIVALENT	DLC ID#	
								STANDARD	PREMIUM
13174	BP1-14PS40S-40-H	1x4	40/30/25W	4000K	4400/3300/2750 lm	110 lm/W	2 x 32W 4ft T8	S-HOE8P9	
13179	BP1-14PS30P-FCCT-H	1x4	30/25/20W	35/40/5000K	3750/3125/2500 lm	125 lm/W	2 x 32W 4ft T8		S-YBLQGV
14642	BP1-14PS30P-FCCT-H-12	1x4	30/25/20W	35/40/5000K	3750/3125/2500 lm	125 lm/W	2 x 32W 4ft T8		S-YBLQGV
13169	BP1-2230S-40-U	2x2	30W	4000K	3300 lm	110 lm/W	2 x 17W 2ft T8	S-MAG6DQ	
13172	BP1-22PS30P-40-U	2x2	30/25/20W	4000K	3750/3125/2500 lm	125 lm/W	2 x 17W 2ft T8		S-PNDBU5
13180	BP1-22PS30P-FCCT-H	2x2	30/25/20W	35/40/5000K	3750/3125/2500 lm	125 lm/W	2 x 17W 2ft T8		S-JTY4O8
14644	BP1-22PS30P-FCCT-H-12	2x2	30/25/20W	35/40/5000K	3750/3125/2500 lm	125 lm/W	2 x 17W 2ft T8		S-JTY4O8
13175	BP1-22PS40S-40-H	2x2	40/30/25W	4000K	4400/3300/2750 lm	110 lm/W	2 x 17W 2ft T8	S-ZKG731	
13170	BP1-2430S-40-U	2x4	30W	4000K	3300 lm	110 lm/W	4 x 32W 4ft T8	S-2ZDV4T	
13173	BP1-24PS30P-40-U	2x4	30/25/20W	4000K	3750/3125/2500 lm	125 lm/W	4 x 32W 4ft T8		S-OD6MLY
13176	BP1-24PS40S-40-H	2x4	40/30/25W	4000K	4400/3300/2750 lm	110 lm/W	4 x 32W 4ft T8	S-4EU69J	
13177	BP1-24PS40P-40-H	2x4	40/30/25W	4000K	5000/3750/3125 lm	125 lm/W	4 x 32W 4ft T8		S-RXB7P
13171	BP1-2440S-40-U	2x4	40W	4000K	4400 lm	110 lm/W	4 x 32W 4ft T8	S-RBC2AG	
13178	BP1-24PS50S-FCCT-U	2x4	50/40/30W	35/40/5000K	5500/4400/3300 lm	110 lm/W	4 x 32W 4ft T8	S-IC6XZ	
13181	BP1-24PS50P-FCCT-H	2x4	50/40/30W	35/40/5000K	6250/5000/3750 lm	125 lm/W	4 x 32W 4ft T8		S-JFYTHL
14643	BP1-24PS50P-FCCT-H-12	2x4	50/40/30W	35/40/5000K	6250/5000/3750 lm	125 lm/W	4 x 32W 4ft T8		S-JFYTHL

Voltage U: 120-277V, H: 120-347V

EP1 Edgelit Flat Panel

- Thin profile is ideal for shallow plenum spaces
- Uses a high quality, non-yellowing PMMA light guide plate for optimum light uniformity
- Available in 1'x4', 2'x2' and 2'x4' sizes
- Compatible with networked lighting controls (-12 Models)
- PowerSet feature allows for multiple lumen stops out of the box
- FieldCCeT features provides multiple color temperature settings in one fixture



ORDER CODE	ITEM #	SIZE	WATTS	CCT	LUMENS	EFFICACY (lm/W)	TRADITIONAL WATTAGE EQUIVALENT	DLC ID#	
								STANDARD	PREMIUM
13536	EP1-14PS30-FCCT-U	1x4	30/25/20W	35/40/5000K	3750/3125/2500 lm	125 lm/W	2 x 32W 4ft T8	S-BKUG2Z	
14639	EP1-14PS30-FCCT-U-12	1x4	30/25/20W	35/40/5000K	3750/3125/2500 lm	125 lm/W	2 x 32W 4ft T8	S-BKUG2Z	
13182	EP1-22PS30-FCCT-U	2x2	40/30/25W	35/40/5000K	4400/3300/2750 lm	125 lm/W	2 x 17W 2ft T8	S-LQVDS3	
14640	EP1-22PS30-FCCT-U-12	2x2	30/25/20W	35/40/5000K	3750/3125/2500 lm	125 lm/W	2 x 17W 2ft T8	S-LQVDS3	
13183	EP1-24PS50-FCCT-U	2x4	50/40/30W	35/40/5000K	6250/5000/3750 lm	125 lm/W	4 x 32W 4ft T8	S-H721EF	
14641	EP1-24PS50-FCCT-U-12	2x4	50/40/30W	35/40/5000K	6250/5000/3750 lm	125 lm/W	4 x 32W 4ft T8	S-H721EF	

Voltage U: 120-277V



VL1 Volumetric Troffer

- Architectural recessed luminaire featuring Controls Ready
- Controls Ready makes adding controls quick and easy. Includes snap-in receptacle for Standalone (Sept '23) and Networked Lighting Controls
- Flat modern lens featuring high-quality, non-yellowing PMMA acrylic lens ensures optimal light uniformity
- Multiple mounting options: recessed, suspended, surface mount
- Available in 1'x4', 2'x2' and 2'x4' sizes
- PowerSet feature allows for multiple lumen stops out of the box
- FieldCCeT features provides multiple color temperature settings in one fixture



ORDER CODE	ITEM #	SIZE	WATTS	CCT	LUMENS	EFFICACY (lm/W)	TRADITIONAL WATTAGE EQUIVALENT	DLC ID#
								STANDARD
13792	VL1-14PS35-FCCT-H	1x4	35/30/22W	3500/4000/5000K	4900/4200/3080 lm	140 lm/W	3x 17WT8, 2U31T8 Fluorescent	S-KZD6IB
13794	VL1-22PS35-FCCT-H	2x2	35/30/22W	3500/4000/5000K	4900/4200/3080 lm	140 lm/W	3x 17WT8, 2U31T8 Fluorescent	S-R2U8EH
13796	VL1-24PS45-FCCT-H	2x4	45/35/26W	3500/4000/5000K	6300/4900/3640 lm	140 lm/W	2x 32T8, 3x 32T8 Fluorescent	S-X93JMS
13797	VL1-24PS45-FCCT-U	2x4	45/35/22W	3500/4000/5000K	6300/4900/3640 lm	140 lm/W	2x 32T8, 3x 32T8 Fluorescent	S-3QDI4R
13798	VL1-24PS90-FCCT-H	2x4	90/75/65W	3500/4000/5000K	12,600/10,500/9100 lm	140 lm/W	6x T8, 4x T5 Fluorescent	S-3VRSPZ

Voltage U: 120-277V, H: 120-347V

VLR1 Volumetric Troffer Retrofit

- Controls Ready Architectural recessed retrofit luminaire
- Controls Ready makes adding controls quick and easy. Includes snap-in receptacle for Standalone (Sept '23) and Networked Lighting Controls
- Available in 1'x4', 2'x2' and 2'x4'
- Flat modern lens featuring high-quality, non-yellowing PMMA acrylic lens ensures optimal light uniformity
- 5 Piece Design, door housing, 2 support brackets and 2 optional side plates to fill the gaps between the fixtures existing ceiling T-bar ensures stability and security
- PowerSet feature allows for multiple lumen stops out of the box
- FieldCCeT features provides multiple color temperature settings in one fixture



ORDER CODE	ITEM #	SIZE	WATTS	CCT	LUMENS	EFFICACY (lm/W)	TRADITIONAL WATTAGE EQUIVALENT	DLC ID#
								STANDARD
13784	VLR1-14PS35-FCCT-H	1x4	35/30/22W	3500/4000/5000K	4900/4200/3080 lm	140 lm/W	3x 17WT8, 2U31T8 Fluorescent	S-3M2T46
13786	VLR1-22PS35-FCCT-H	2x2	35/30/22W	3500/4000/5000K	4900/4200/3080 lm	140 lm/W	3x 17WT8, 2U31T8 Fluorescent	S-IB9ZMP
13788	VLR1-24PS45-FCCT-H	2x4	45/35/26W	3500/4000/5000K	6300/4900/3640 lm	140 lm/W	2x 32T8, 3x 32T8 Fluorescent	S-A9QN40
13789	VLR1-24PS45-FCCT-U	2x4	45/35/26W	3500/4000/5000K	6300/4900/3640 lm	140 lm/W	2x 32T8, 3x 32T8 Fluorescent	S-V514JO
13790	VLR1-24PS90-FCCT-H	2x4	90/75/65W	3500/4000/5000K	12,600/10,500/9100 lm	140 lm/W	6x T8, 4x T5 Fluorescent	S-X69WBF

Voltage U: 120-277V, H: 120-347V

TROFFERS



LW Linear Wrap

- Ideal for storage areas, utility rooms, stairwells, corridors, and similar applications
- 2' and 4' versions
- Up to 115 lumens per watt
- High efficacy LED engine maximizes energy savings
- Full length wrap-around U-shaped prismatic acrylic lens
- FieldCCeT feature allows for multiple "set and forget" CCT options
- Center Basket accessory available to hide driver and wires for clean uniform look



ORDER CODE	ITEM #	SIZE	WATTS	CCT	LUMENS	EFFICACY (lm/W)	CRI	DIMMING	DLC ID#	
									STANDARD	
12566	LW2/25W/840/HD	2'	25W	4000K	2875 lm	115 lm/W	>80	0-10V	PVW3R8V	
12568	LW2/PS25/FCCT3/HD	2'	15/20/25W	35/40/5000K	2875 lm	115 lm/W	>80	0-10V	PCST5Q4I	
11631	LW4/27W/9FCCT3/UD	4'	27W	35/40/5000K	3000 lm	115 lm/W	>80	0-10V	PTH5AP2	
11632	LW4/36W/9FCCT3/UD	4'	36W	35/40/5000K	4000 lm	115 lm/W	>80	0-10V	PE9D0TZM	
12567	LW4/45W/840/HD	4'	45W	4000K	5175 lm	115 lm/W	>80	0-10V	PVWJXPY	
12569	LW4/PS45/FCCT3/HD	4'	27/36/25W	35/40/5000K	5175 lm	115 lm/W	>80	0-10V	P10T6YNO	

Voltage U: 120-277V

LLW Linear Wrap

- 2' and 4' versions
- >115 lumens per watt
- Ideal replacement for less efficient fluorescent wrap fixtures
- Perfect for lower traffic areas



ORDER CODE	ITEM #	SIZE	WATTS	CCT	LUMENS	EFFICACY (lm/W)	CRI	12V OUTPUT	DIMMING	DLC ID#	
										STANDARD	
12577	LLW2/20W/8FCCT/UD	2'	20W	35/40/5000K	2300 lm	115 lm/W	>80	200mA	0-10V	S-N9HWZ0	
12578	LLW2/PS24/8FCCT/HD	2'	24/20/16W	35/40/5000K	2760/2300/1840 lm	115 lm/W	>80	n/a	0-10V	S-0SWDME	
12580	LLW2/40W/8FCCT/UD	2'	40W	35/40/5000K	4600 lm	115 lm/W	>80	200mA	0-10V	S-XIR2HQ	
12581	LLW2/48W/8FCCT/UD	2'	48W	35/40/5000K	5520 lm	115 lm/W	>80	200mA	0-10V	S-OWCHR3	
11443	LLW4-368-32W-840-HD	4'	32W	4000K	3680 lm	115 lm/W	>80	n/a	0-10V	PNIX397A	
12579	LLW4/32W/8FCCT/UD	4'	32W	35/40/5000K	3680 lm	115 lm/W	>80	200mA	0-10V	S-NTV8YP	
11444	LLW4-460-40W-840-HD	4'	40W	4000K	4600 lm	115 lm/W	>80	n/a	0-10V	PDJFW878	
11445	LLW4-552-48W-840-HD	4'	48W	4000K	5520 lm	115 lm/W	>80	n/a	0-10V	P67LU7LR	
12582	LLW4/PS48/8FCCT/HD	4'	48/40/32W	35/40/5000K	5520/4600/3680 lm	115 lm/W	>80	n/a	0-10V	S-7T8SAB	

Voltage U: 120-277V, H: 120-347V

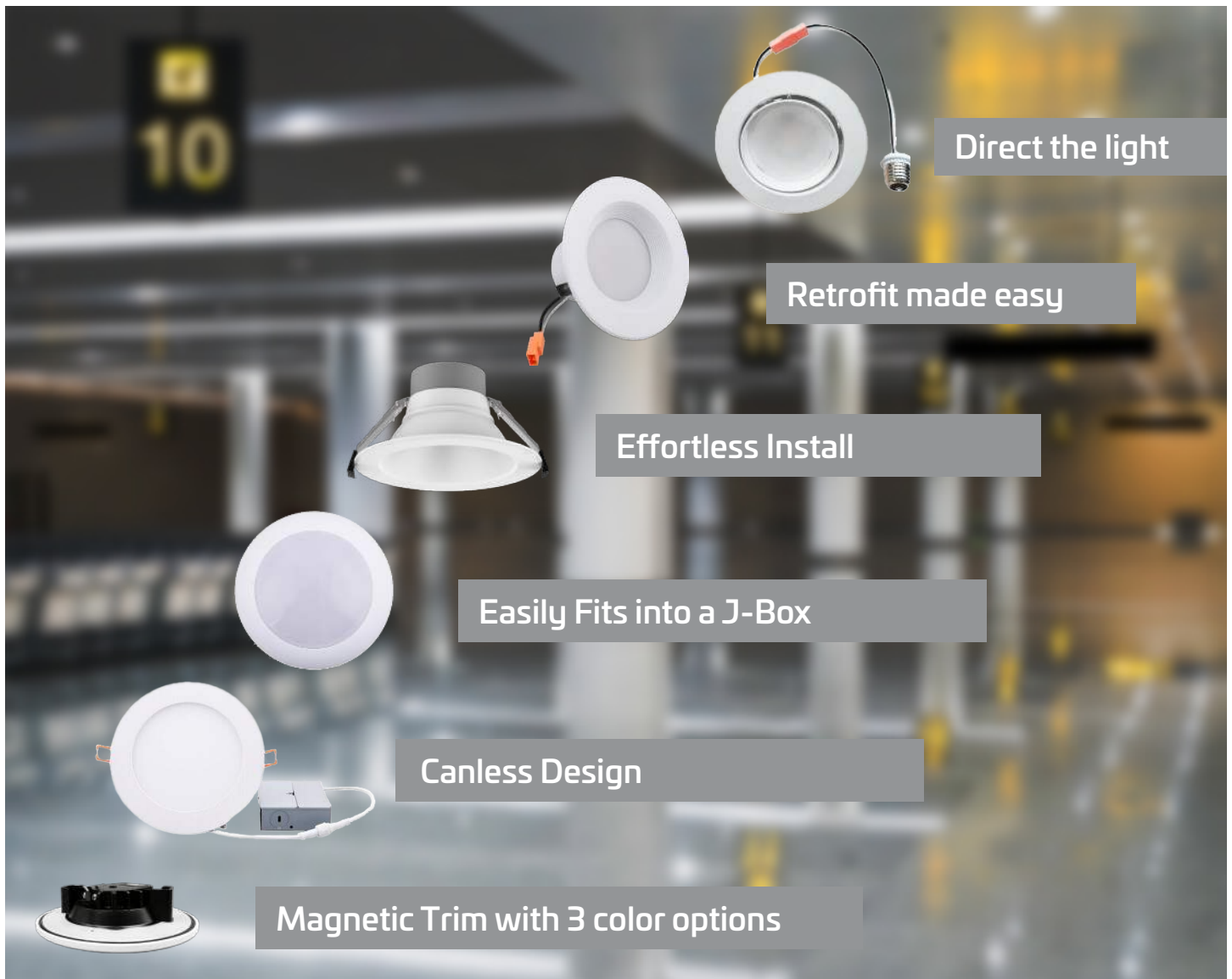
TRW Tube Ready Wrap

- Designed for maximum flexibility
- Pre-wired for double ended line voltage LED T8 tubes (Type B) and external driver double ended LED T8 tube (Type C)
- Choose from a wide variety of LED linear lamps
- Maximum ROI: low costs, ease of maintenance, energy savings, and low installation times



ORDER CODE	ITEM #	SIZE	# OF LAMPS	MAX WATTAGE PER LAMP
11190	TRW2-22T8DE	2'	2	32W
10874	TRW4-24DE	4'	2	32W

Voltage: Lamp Dependent



CD Commercial Downlight

- Provides comfortable diffused light
- 0-10V dimming
- 85° beam angle
- PowerSet feature allows for multiple “set and forget” lumen stops
- FieldCCeT feature allows for multiple “set and forget” CCT options
- Suitable for new construction or remodel applications
- Flexible steel conduit with 1/2" KO (3/8" Trade Size) snap in connector



ORDER CODE	ITEM #	SIZE	WATTS	CCT	LUMENS	EFFICACY (lm/W)	CRI	DIMMING	ENERGY STAR
11024	CD4/PS12/FCCT/UD	4"	12/8/6W	30/35/4000K	540-1140 lm	95 lm/W	80	0-10V	★
11025	CD6/PS16/FCCT/UD	6"	16/12/8W	30/35/4000K	760-1525 lm	95 lm/W	80	0-10V	★
12596	CD6/PS33/FCCT/UD	6"	33/26/20W	30/40/5000K	2400-4000 lm	121 lm/W	80	0-10V	★
11026	CD8/PS22/FCCT/UD	8"	22/16/12W	30/35/4000K	1280-2125 lm	97 lm/W	80	0-10V	★
11027	CD10/PS33/FCCT/UD	10"	33/26/22W	30/35/4000K	2125-3140 lm	95 lm/W	80	0-10V	★

Voltage U: 120-277V



DWR Downlight Wafer Remote

- Canless design
- Easily installs into drywall or suspended ceilings
- Includes remote driver/junction box
- IC Rated
- FieldCCeT feature allows for multiple “set and forget” CCT options in each fixture



RoHS Compliant



ORDER CODE	ITEM #	SIZE	WATTS	CCT	LUMENS	EFFICACY (lm/W)	CRI	DIMMING	T24 J A 8	ENERGY STAR
12132	DWR4/13W/830/120DT	4"	13W	3000K	800 lm	62 lm/W	80	Triac		★
12135	DWR4/13W/9CCT5/120DT	4"	13W	27/30/35/40/5000K	800 lm	90 lm/W	90	Triac	✓	★
12133	DWR6/16W/830/120DT	6"	16W	3000K	1200 lm	75 lm/W	80	Triac		★
12136	DWR6/16W/9CCT5/120DT	6"	16W	27/30/35/40/5000K	1200 lm	90 lm/W	90	Triac	✓	★
12134	DWR8/20W/830/120DT	8"	20W	3000K	1600 lm	80 lm/W	80	Triac		★
12137	DWR8/20W/9CCT5/120DT	8"	20W	27/30/35/40/5000K	1600 lm	90 lm/W	90	Triac	✓	★

Voltage: 120V

DSD Downlight Surface Disk

- Easy installs directly to the J-box
- Low-profile design
- Ceiling mount
- Suitable for use in showers and other wet locations
- FieldCCeT feature allows for multiple “5 set and forget” CCT options in each fixture



RoHS Compliant



ORDER CODE	ITEM #	SIZE	WATTS	CCT	LUMENS	EFFICACY (lm/W)	CRI	DIMMING	T24 J A 8	ENERGY STAR
12490	DSD4/10W/830/120DTWH	4"	10W	3000K	700 lm	70 lm/W	80	Triac		★
12493	DSD4/10W/FCCT/120DTWH	4"	10W	27/30/35/40/5000K	830 lm	83 lm/W	90	Triac	✓	★
12491	DSD6/13W/830/120DTWH	6"	13W	3000K	1000 lm	77 lm/W	80	Triac		★
12494	DSD6/13W/FCCT/120DTWH	6"	13W	27/30/35/40/5000K	1080 lm	83 lm/W	90	Triac	✓	★
12492	DSD8/15W/830/120DTWH	8"	15W	3000K	1200 lm	80 lm/W	80	Triac		★
12495	DSD8/15W/FCCT/120DTWH	8"	15W	27/30/35/40/5000K	1245 lm	86 lm/W	90	Triac	✓	★

Voltage: 120V

DS4 Downlight Surface Slim

- Replaces legacy 4" CFL or incandescent downlights
- Easy install directly to the J-box or retrofit accessory for existing housing
- Optional color trims can be easily snapped on to customize the look of the fixture
- Provides comfortable diffused light with no dark spots
- FieldCCeT feature allows for multiple “set and forget” CCT options in each fixture



RoHS Compliant



ORDER CODE	ITEM #	SIZE	WATTS	CCT	LUMENS	CRI	DIMMING	ETL	ENERGY STAR
12144	DS4/S1/8W/830/120DTWH	4"	8W	3000K	700 lm	>80	Triac	Wet	★
12145	DS4/S1/8W/FCCT5/120DTWH	4"	8W	27/30/35/40/5000K	800 lm	>80	Triac	Wet	★

Voltage: 120V



DRTR Downlight Rotatable Retrofit

- Ideal for accent, display, or wall washing
- Integrated white trim with medium base (E26) socket adapters (included) for direct replacement
- Fits many popular 4" and 6" recessed downlight fixtures
- Lasts up to 30X longer than traditional incandescent
- FieldCCeT feature (select models) allows for multiple "set and forget" CCT options in each fixture
- Instant-on, no warm-up time



ORDER CODE	ITEM #	SIZE	WATTS	CCT	LUMENS	EFFICACY (lm/W)	DIMMING	T24 JAB	ENERGY STAR
12130	DRTR4/10W/9CCT5/120DT	4"	10W	27/30/35/40/5000K	800 lm	80 lm/W	Triac	✓	★
12128	DRTR4/12W/830/120DT	4"	12W	3000K	750 lm	63 lm/W	Triac		★
12131	DRTR6/11W/9CCT5/120DT	6"	11W	27/30/35/40/5000K	880 lm	80 lm/W	Triac	✓	★
12129	DRTR6/13W/830/120DT	6"	13W	3000K	900 lm	70 lm/W	Triac		★

Voltage: 120V

RDR Downlight Retrofit

- Replaces legacy 4" or 6" CFL or incandescent downlights
- Provides comfortable diffused light with no dark spots
- Integrated white trim with medium base (E26) socket adapters (included) for direct replacement into medium base cans
- FieldCCeT feature (select models) allows for multiple "set and forget" CCT options in each fixture



ORDER CODE	ITEM #	SIZE	WATTS	CCT	LUMENS	CRI	DAMP/WET LOCATION	TITLE 20/JAB	ENERGY STAR
11199	RDR4-65-10W-830-120DT-WH-B	4"	10W	3000K	650 lm	>80	Damp		★
11571	RDR4/10W/9CCT5/120DTWHB	4"	10W	27/30/35/40/5000k	800 lm	>90	Wet	✓	★
11203	RDR4-85-13W-830-120DT-WH-B	4"	13W	3000K	850 lm	>80	Wet		★
12518	RDR4/13W/830/120DTWHB	4"	13W	3000K	650 lm	>80	Wet		★
12520	RDR4/PS13/9FCCT/120DTWHB	4"	13W/10W/8W	27/30/35/40/5000k	1040/800/640 lm	>90	Wet	✓	★
11201	RDR6-75-11W-830-120DT-WH-B	6"	11W	3000K	750 lm	>80	Damp		★
12670	RDR6/13W/830/120DT	6"	13W	3000K	900 lm	>80	Wet		★
11572	RDR6/13W/9CCT5/120DTWHB	6"	13W	27/30/35/40/5000k	1,040 lm	>90	Wet	✓	★
12519	RDR6/16W/830/120DTWHB	6"	16W	3000K	1500 lm	>80	Wet		★
11204	RDR6-120-17W-830-120DT-WH-B	6"	17W	3000K	1200 lm	>80	Wet		★
12520	RDR4/PS13/9FCCT/120DTWHB	4"	13W/10W/8W	27/30/35/40/5000k	1040/800/640 lm	>90	Wet	✓	★
12521	RDR6/PS17/9FCCT/120DTWHB	6"	17W/13W/10W	27/30/35/40/5000k	1400/1100/850 lm	>90	Wet	✓	★

Voltage: 120V

ENHANCED PROJECT SOLUTIONS

Visit eiko.com for FREE access to online tools

Payback Calculator

Rebate Finder

Indoor Lighting Layouts

Outdoor Lighting Layouts



AGES Flush Mount Light

- A decorative silver metal ring with polycarbonate lens style fixture ideal for use in a variety of residential and commercial applications
- Lightweight design makes it easy to install
- Triac Dimmable
- FieldCCEt feature allows for multiple “set and forget” CCT options in each fixture



ORDER CODE	ITEM #	SIZE	WATTS	LUMENS	CCT	CRI	DIMMING	ENERGY STAR
11269	FIMAGE12-120-16W-830-120DT-SL	12"	16W	1200	3000K	80+	Triac	★
11271	FIMAGE12-120-16W-8CCT5-120DT-SL	12"	16W	1200	27/30/35/40/5000K	80+	Triac	★
11270	FIMAGE14-150-20W-830-120DT-SL	14"	20W	1500	3000K	80+	Triac	★
11272	FIMAGE14-150-20W-8CCT5-120DT-SL	14"	20W	1500	27/30/35/40/5000K	80+	Triac	★
11272	FIMAGE16-180-24W-8CCT5-120DT-SL	16"	24W	1800	27/30/35/40/5000K	80+	Triac	★

Voltage: 120V

ODYSSEY Light

- A decorative mushroom style fixture ideal for use in a variety of residential and commercial applications
- Durable, lightweight alternative to glass
- Provides comfortable diffused light
- Shatter resistant plastic construction
- Triac dimmable



ORDER CODE	ITEM #	SIZE	WATTS	LUMENS	CCT	CRI	DIMMING	ENERGY STAR
11274	FMODY11-120-16W-830-120DT	11"	16W	1200	3000K	80+	Triac	★
11275	FMODY14-187-25W-830-120DT	14"	25W	1875	3000K	80+	Triac	★

Voltage: 120V



DECORATIVE LIGHTING SOLUTIONS FOR HOMES, HOTELS, MOTELS, HALLWAYS, DORM ROOMS



BRV Bulb Ready Vanity

- Pre-wired and ready for the medium base lamps (LED A19 recommended)
- Available in two models (Leadwood or Westwood)
- Bronze or Nickel finish
- Dimmable based on lamp used
- Available in 3 lengths
- Compatible with suitable LED A19 lamps

LEAWOOD



WESTWOOD

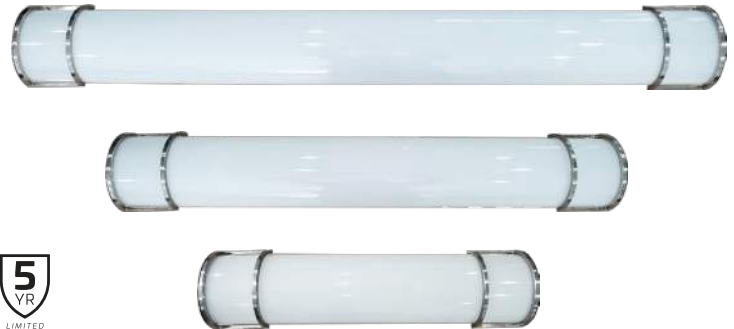


ORDER CODE	ITEM #	SIZE	STYLE	NO. OF LAMPS	FINISH
11398	BRVLW-2A19-BZ	13.4"	Leawood	2 A19 lamp	Bronze
11399	BRVLW-2A19-NI	13.4"	Leawood	2 A19 lamp	Nickel
11400	BRVLW-3A19-BZ	19.69"	Leawood	3 A19 lamp	Bronze
11401	BRVLW-3A19-NI	19.69"	Leawood	3 A19 lamp	Nickel
11402	BRVLW-4A19-BZ	27"	Leawood	4 A19 lamp	Bronze
11403	BRVLW-4A19-NI	27"	Leawood	4 A19 lamp	Nickel
11394	BRVWW-2A19-BZ	13.4"	Westwood	2 A19 lamp	Bronze
11395	BRVWW-2A19-NI	13.4"	Westwood	2 A19 lamp	Nickel
11396	BRVWW-3A19-BZ	19.69"	Westwood	3 A19 lamp	Bronze
11397	BRVWW-3A19-NI	19.69"	Westwood	3 A19 lamp	Nickel

Voltage: Lamp Dependent

VAN Lenexa Vanity

- 2', 3', 4' options
- Durable polycarbonate lens
- Steel body
- Nickel finish
- Triac or 0-10V Dimming
- FieldCCeT feature allows for multiple "set and forget" CCT options on select fixtures



ORDER CODE	ITEM #	SIZE	WATTS	CCT	LUMENS	EFFICACY (lm/W)	CRI	DIMMING	ENERGY STAR
11372	VANLX2-210-28W-830-120-NI	2'	28W	3000K	2100 lm	75 lm/W	>80	Triac	★
11369	VANLX2-210-28W-9FCCT3-120D-NI	2'	28W	2700/3000/4000K	2100 lm	75 lm/W	>90	0-10V	★
11373	VANLX3-300-40W-830-120-NI	3'	40W	3000K	3000 lm	75 lm/W	>80	Triac	★
11370	VANLX3-300-40W-9FCCT3-120D-NI	3'	40W	2700/3000/4000K	3000 lm	75 lm/W	>90	0-10V	★
11374	VANLX4-400-55W-830-120-NI	4'	55W	3000K	4000 lm	72 lm/W	>80	Triac	★
11371	VANLX4-400-56W-9FCCT3-120D-NI	4'	56W	2700/3000/4000K	4000 lm	71 lm/W	>90	0-10V	★

Voltage: 120V

RESIDENTIAL



WKL1 Work Light

- Portable, high lumens lighting
- Heavy duty die-cast aluminum housing
- High quality powder paint finish
- Energy efficient COB LED technology
- Shatter-proof tempered glass
- Multiple mounting options including adjustable tripod and heavy duty hook (sold separately)



RoHS Compliant



IP65

ORDER CODE	ITEM #	WATTS	CCT	LUMENS	EFFICACY (lm/W)	REPLACES HID
313575	WKL1-304-1	30W	4000K	2600 lm	84 lm/W	Up to 100W HID
313576	WKL1-504-1	50W	4000K	4200 lm	84 lm/W	Up to 150W HID

Voltage: 100-240V

Distribution Types Explained





AAL1 Area Light

- Architectural thin profile used for area light applications
- Controls Ready makes adding controls quick and easy. Includes screw-in receptacle for Standalone sensors or Networked Lighting Controls
- NEMA 7-pin photocell receptacle available by factory modification
- T2, T3, T4, T5 lens optics available
- Multiple mounting options available for versatile use (mounts sold separately)
- Hinged toolless access junction box makes installation and maintenance easier
- Includes pre-installed 3.3ft (1m) power cord
- One: 1/2" side knockout
- PowerSet feature allows for multiple lumen stops out of the box
- FieldCCT features provides multiple color temperature settings in one fixture



(*T2&T4: AVAILABLE BY TAKING T3 OR T5 ITEM & SWAPPING OUT LENS VIA FACTORY MOD)

ORDER CODE	ITEM #	WATTS**	CCT***	LUMENS	EFFICACY (lm/W)	DIST. TYPE	VOLTAGE	TRADITIONAL WATTAGE EQUIVALENT	DLC ID #
									PREMIUM
14702	AAL1-PS100-40T2-U*	100/80/60W	4000K	14,000/11,200/8400 lm	140 lm/W	T2	120-277V	up to 400W HID	S-4K0NFJ
14703	AAL1-PS100-50T2-U*	100/80/60W	5000K	14,000/11,200/8400 lm	140 lm/W	T2	120-277V	up to 400W HID	S-ZTU3B1
13607	AAL1-PS100-40T3-U	100/80/60W	4000K	14,000/11,200/8400 lm	140 lm/W	T3	120-277V	up to 400W HID	S-TNL7UW
13609	AAL1-PS100-50T3-U	100/80/60W	5000K	14,000/11,200/8400 lm	140 lm/W	T3	120-277V	up to 400W HID	S-4M8NGL
14721	AAL1-PS100-40T4-U*	100/80/60W	4000K	14,000/11,200/8400 lm	140 lm/W	T4	120-277V	up to 400W HID	S-RK7WIY
14722	AAL1-PS100-50T4-U*	100/80/60W	5000K	14,000/11,200/8400 lm	140 lm/W	T4	120-277V	up to 400W HID	S-AX698Y
13606	AAL1-PS100-40T5-U	100/80/60W	4000K	14,000/11,200/8400 lm	140 lm/W	T5	120-277V	up to 400W HID	S-8NQI0S
13608	AAL1-PS100-50T5-U	100/80/60W	5000K	14,000/11,200/8400 lm	140 lm/W	T5	120-277V	up to 400W HID	S-DCJSRO
14690	AAL1-150-40T2-U*	150W	4000K	21,000 lm	140 lm/W	T2	120-277V	400W HID	S-TM100J
14691	AAL1-150-40T2-V*	150W	4000K	21,000 lm	140 lm/W	T2	277-480V	400W HID	S-2OKWTY
14692	AAL1-150-50T2-U*	150W	5000K	21,000 lm	140 lm/W	T2	120-277V	400W HID	S-S15D4B
14693	AAL1-150-50T2-V*	150W	5000K	21,000 lm	140 lm/W	T2	277-480V	400W HID	S-90ZD58
13579	AAL1-150-40T3-U	150W	4000K	21,000 lm	140 lm/W	T3	120-277V	400W HID	S-Q9JZ2H
13583	AAL1-150-40T3-V	150W	4000K	21,000 lm	140 lm/W	T3	277-480V	400W HID	S-JM7QRI
13585	AAL1-150-50T3-U	150W	5000K	21,000 lm	140 lm/W	T3	120-277V	400W HID	S-WS8PV9
13587	AAL1-150-50T3-V	150W	5000K	21,000 lm	140 lm/W	T3	277-480V	400W HID	S-KJIELX
14710	AAL1-150-40T4-U*	150W	4000K	21,000 lm	140 lm/W	T4	120-277V	400W HID	S-5P39WX
14711	AAL1-150-40T4-V*	150W	4000K	21,000 lm	140 lm/W	T4	277-480V	400W HID	S-U0CD6Q
14712	AAL1-150-50T4-U*	150W	5000K	21,000 lm	140 lm/W	T4	120-277V	400W HID	S-L3A76D
14713	AAL1-150-50T4-V*	150W	5000K	21,000 lm	140 lm/W	T4	277-480V	400W HID	S-3NJYE7
13578	AAL1-150-40T5-U	150W	4000K	21,000 lm	140 lm/W	T5	120-277V	400W HID	S-9GWLNQ
13582	AAL1-150-40T5-V	150W	4000K	21,000 lm	140 lm/W	T5	277-480V	400W HID	S-TCGADO
13584	AAL1-150-50T5-U	150W	5000K	21,000 lm	140 lm/W	T5	120-277V	400W HID	S-6JKWP4
13586	AAL1-150-50T5-V	150W	5000K	21,000 lm	140 lm/W	T5	277-480V	400W HID	S-17HTDJ
14704	AAL1-PS150-FCCTT2-U*	150/130/100W	3000/4000/5000K	21,000/18,200/14,000 lm	140 lm/W	T2	120-277V	up to 400W HID	S-FAL057
14705	AAL1-PS150-FCCTT2-V*	150/130/100W	3000/4000/5000K	21,000/18,200/14,000 lm	140 lm/W	T2	277-480V	up to 400W HID	S-MVWK28
13621	AAL1-PS150-FCCTT3-U	150/130/100W	3000/4000/5000K	21,000/18,200/14,000 lm	140 lm/W	T3	120-277V	up to 400W HID	S-HCIM8B
14681	AAL1-PS150-FCCTT3-V	150/130/100W	3000/4000/5000K	21,000/18,200/14,000 lm	140 lm/W	T3	277-480V	up to 400W HID	S-YGKEH2
14723	AAL1-PS150-FCCTT4-U*	150/130/100W	3000/4000/5000K	21,000/18,200/14,000 lm	140 lm/W	T4	120-277V	up to 400W HID	S-XM3WLQ
14724	AAL1-PS150-FCCTT4-V*	150/130/100W	3000/4000/5000K	21,000/18,200/14,000 lm	140 lm/W	T4	277-480V	up to 400W HID	S-T8OWUV
13614	AAL1-PS150-30T5-U	150/130/100W	3000K	21,000/18,200/14,000 lm	140 lm/W	T5	120-277V	up to 400W HID	S-QM241F
13620	AAL1-PS150-FCCTT5-U	150/130/100W	3000/4000/5000K	21,000/18,200/14,000 lm	140 lm/W	T5	120-277V	up to 400W HID	S-W1RAHP
14679	AAL1-PS150-FCCTT5-V	150/130/100W	3000/4000/5000K	21,000/18,200/14,000 lm	140 lm/W	T5	277-480V	up to 400W HID	S-E429BI
14694	AAL1-200-40T2-U*	200W	4000K	28,000 lm	140 lm/W	T2	120-277V	750W HID	S-H3O9PV
14695	AAL1-200-50T2-U*	200W	5000K	28,000 lm	140 lm/W	T2	120-277V	750W HID	S-T73N1S
13589	AAL1-200-40T3-U	200W	4000K	28,000 lm	140 lm/W	T3	120-277V	750W HID	S-S5N7LK
13591	AAL1-200-50T3-U	200W	5000K	28,000 lm	140 lm/W	T3	120-277V	750W HID	S-7BOC1D
14714	AAL1-200-40T4-U*	200W	4000K	28,000 lm	140 lm/W	T4	120-277V	750W HID	S-A2LU6C
14715	AAL1-200-50T4-U*	200W	5000K	28,000 lm	140 lm/W	T4	120-277V	750W HID	S-WJD5S7

Voltage U: 120-277V, V: 277-480V



AAL1 Area Light Cont'd

(*T2&T4: AVAILABLE BY TAKING T3 OR T5 ITEM & SWAPPING OUT LENS VIA FACTORY MOD)

ORDER CODE	ITEM #	WATTS**	CCT***	LUMENS	EFFICACY (lm/W)	DIST. TYPE	VOLTAGE	TRADITIONAL WATTAGE EQUIVALENT	DLC ID #
									PREMIUM
13588	AAL1-200-40T5-U	200W	4000K	28,000 lm	140 lm/W	T5	120-277V	750W HID	S-N41QZV
13590	AAL1-200-50T5-U	200W	5000K	28,000 lm	140 lm/W	T5	120-277V	750W HID	S-LK6DNG
14696	AAL1-240-40T2-U*	240W	4000K	33,600 lm	140 lm/W	T2	120-277V	1000W HID	S-FBT74M
14697	AAL1-240-50T2-U*	240W	5000K	33,600 lm	140 lm/W	T2	120-277V	1000W HID	S-K80GQC
13593	AAL1-240-40T3-U	240W	4000K	33,600 lm	140 lm/W	T3	120-277V	1000W HID	S-QQ8BTF
13595	AAL1-240-50T3-U	240W	5000K	33,600 lm	140 lm/W	T3	120-277V	1000W HID	S-MODE1R
14716	AAL1-240-40T4-U*	240W	4000K	33,600 lm	140 lm/W	T4	120-277V	1000W HID	S-RFAPVM
14717	AAL1-240-50T4-U*	240W	5000K	33,600 lm	140 lm/W	T4	120-277V	1000W HID	S-U102KX
13592	AAL1-240-40T5-U	240W	4000K	33,600 lm	140 lm/W	T5	120-277V	1000W HID	S-ANTOU3
13594	AAL1-240-50T5-U	240W	5000K	33,600 lm	140 lm/W	T5	120-277V	1000W HID	S-EYD3NP
14698	AAL1-300-40T2-U*	300W	4000K	42,000 lm	140 lm/W	T2	120-277V	1000W HID	S-K76U0R
14699	AAL1-300-40T2-V*	300W	4000K	42,000 lm	140 lm/W	T2	277-480V	1000W HID	S-V12GL7
14700	AAL1-300-50T2-U*	300W	5000K	42,000 lm	140 lm/W	T2	120-277V	1000W HID	S-UQ4PJA
14701	AAL1-300-50T2-V*	300W	5000K	42,000 lm	140 lm/W	T2	277-480V	1000W HID	S-TZ1CM2
13597	AAL1-300-40T3-U	300W	4000K	42,000 lm	140 lm/W	T3	120-277V	1000W HID	S-7XO2ZQ
13601	AAL1-300-40T3-V	300W	4000K	42,000 lm	140 lm/W	T3	277-480V	1000W HID	S-KZOMAC
13603	AAL1-300-50T3-U	300W	5000K	42,000 lm	140 lm/W	T3	120-277V	1000W HID	S-ZFUR6M
13605	AAL1-300-50T3-V	300W	5000K	42,000 lm	140 lm/W	T3	277-480V	1000W HID	S-8OAY3R
14544	AAL1-300-40T4-U*	300W	4000K	42,000 lm	140 lm/W	T4	120-277V	1000W HID	S-2B31ME
14718	AAL1-300-40T4-V*	300W	4000K	42,000 lm	140 lm/W	T4	277-480V	1000W HID	S-ZHGMEN
14719	AAL1-300-50T4-U*	300W	5000K	42,000 lm	140 lm/W	T4	120-277V	1000W HID	S-QDTMA2
14720	AAL1-300-50T4-V*	300W	5000K	42,000 lm	140 lm/W	T4	277-480V	1000W HID	S-1ID7HC
13596	AAL1-300-40T5-U	300W	4000K	42,000 lm	140 lm/W	T5	120-277V	1000W HID	S-H9JI6Z
13600	AAL1-300-40T5-V	300W	4000K	42,000 lm	140 lm/W	T5	277-480V	1000W HID	S-FWHQJC
13602	AAL1-300-50T5-U	300W	5000K	42,000 lm	140 lm/W	T5	120-277V	1000W HID	S-AU95FD
13604	AAL1-300-50T5-V	300W	5000K	42,000 lm	140 lm/W	T5	277-480V	1000W HID	S-O0TP5G
13616	AAL1-PS300-30T5-U	300/240/200W	3000K	42,000/33,600/28,000 lm	140 lm/W	T5	120-277V	up to 1000W HID	S-P01G86
14706	AAL1-PS300-FCCTT2-U*	300/240/200W	3000/4000/5000K	42,000/33,600/28,000 lm	140 lm/W	T2	120-277V	up to 1000W HID	S-35LX4G
14707	AAL1-PS300-FCCTT2-V*	300/240/200W	3000/4000/5000K	42,000/33,600/28,000 lm	140 lm/W	T2	277-480V	up to 1000W HID	S-RB70EY
13625	AAL1-PS300-FCCTT3-U	300/240/200W	3000/4000/5000K	42,000/33,600/28,000 lm	140 lm/W	T3	120-277V	up to 1000W HID	S-3ZO652
14682	AAL1-PS300-FCCTT3-V	300/240/200W	3000/4000/5000K	42,000/33,600/28,000 lm	140 lm/W	T3	277-480V	up to 1000W HID	S-19YBDT
14725	AAL1-PS300-FCCTT4-U*	300/240/200W	3000/4000/5000K	42,000/33,600/28,000 lm	140 lm/W	T4	120-277V	up to 1000W HID	S-Y8OZBE
14726	AAL1-PS300-FCCTT4-V*	300/240/200W	3000/4000/5000K	42,000/33,600/28,000 lm	140 lm/W	T4	277-480V	up to 1000W HID	S-98YE5P
13624	AAL1-PS300-FCCTT5-U	300/240/200W	3000/4000/5000K	42,000/33,600/28,000 lm	140 lm/W	T5	120-277V	up to 1000W HID	S-0LI81D
14680	AAL1-PS300-FCCTT5-V	300/240/200W	3000/4000/5000K	42,000/33,600/28,000 lm	140 lm/W	T5	277-480V	up to 1000W HID	S-UH9T73
14708	AAL1-PS450-40T2-U*	450/400/350W	4000K	63,000/56,000/49,000 lm	140 lm/W	T2	120-277V	up to 1000W HID	S-A9JRF0
14709	AAL1-PS450-50T2-U*	450/400/350W	5000K	63,000/56,000/49,000 lm	140 lm/W	T2	120-277V	up to 1000W HID	S-T5FB7H
13611	AAL1-PS450-40T3-U	450/400/350W	4000K	63,000/56,000/49,000 lm	140 lm/W	T3	120-277V	up to 1000W HID	S-U0CAOE
13613	AAL1-PS450-50T3-U	450/400/350W	5000K	63,000/56,000/49,000 lm	140 lm/W	T3	120-277V	up to 1000W HID	S-9MF6B5
14545	AAL1-PS450-40T4-U*	450/400/350W	4000K	63,000/56,000/49,000 lm	140 lm/W	T4	120-277V	up to 1000W HID	S-48FHMI
14727	AAL1-PS450-50T4-U*	450/400/350W	5000K	63,000/56,000/49,000 lm	140 lm/W	T4	120-277V	up to 1000W HID	S-Z57CU4
13610	AAL1-PS450-40T5-U	450/400/350W	4000K	63,000/56,000/49,000 lm	140 lm/W	T5	120-277V	up to 1000W HID	S-6B5FYO
13612	AAL1-PS450-50T5-U	450/400/350W	5000K	63,000/56,000/49,000 lm	140 lm/W	T5	120-277V	up to 1000W HID	S-M84KLO
14913	AAL1-PS450-40T2-V*	450/400/350W	4000K	63,000/56,000/49,000 lm	140 lm/W	T2	277-480V	up to 1000W HID	S-4JQKMD
14906	AAL1-PS450-50T2-V*	450/400/350W	5000K	63,000/56,000/49,000 lm	140 lm/W	T2	277-480V	up to 1000W HID	S-X0T357
14911	AAL1-PS450-40T3-V*	450/400/350W	4000K	63,000/56,000/49,000 lm	140 lm/W	T3	277-480V	up to 1000W HID	S-56FQPN
14907	AAL1-PS450-50T3-V*	450/400/350W	5000K	63,000/56,000/49,000 lm	140 lm/W	T3	277-480V	up to 1000W HID	S-XLZ7PR
14912	AAL1-PS450-40T4-V*	450/400/350W	4000K	63,000/56,000/49,000 lm	140 lm/W	T4	277-480V	up to 1000W HID	S-OQRISZ
14908	AAL1-PS450-50T4-V*	450/400/350W	5000K	63,000/56,000/49,000 lm	140 lm/W	T4	277-480V	up to 1000W HID	S-D4LYGX
14910	AAL1-PS450-40T5-V*	450/400/350W	4000K	63,000/56,000/49,000 lm	140 lm/W	T5	277-480V	up to 1000W HID	S-E570GT
14909	AAL1-PS450-50T5-V*	450/400/350W	5000K	63,000/56,000/49,000 lm	140 lm/W	T5	277-480V	up to 1000W HID	S-2TNQVL

Mounting arms are sold separately, see next page.

Voltage U: 120-277V, V: 277-480V



MOUNTING ARMS FOR AAL1



AAL1-FM; Direct



AAL1-MA; Adjustable Direct



AAL1-SF; Slip Fitter



AAL1-TR; Trunnion

PA1 Pole Adapters

- Increase coverage and versatility with EIKO's brackets and tenon mount adapters
- Choose from brackets and tenon mount adapters
- Constructed from high grade steel to meet strict quality standards
- All brackets and tenon adapters are bronze
- Brackets are a great way to light multiple areas using just one pole
- Brackets provide an array of mounting arms: 2 in line, 3 in line, 4 at 90°
- Brackets have a 2 3/8" tenon
- Brackets have end caps included
- Tenon mount adapters are available for round or square pole tops
- Round tenon mount adapters are available in 3", 4" and 5"
- Square tenon mount adapters are available in 4" and 5"
- Mounting hardware included
- Can be used on Steel or Aluminum



ORDER CODE	ITEM #	DESCRIPTION
BRACKETS		
13931	PA1-2BH-BZ	Pole Adapter for Two Heads, Round-Square-Round, Pipe Diameter 2-3/8", End Caps Included, Bronze
13932	PA1-3BH-BZ	Pole Adapter for Three Heads, Round-Square-Round, Pipe Diameter 2-3/8", End Caps Included, Bronze
13936	PA1-4XBH-BZ	Pole Adaptor for Four Heads, Round-Square-Round, Pipe Diameter 2-3/8", End Caps Included, Bronze
TENON ADAPTERS		
13933	PA1-3RT-BZ	2-3/8" Tenon Adapter for 3" Round Poles, Bronze
13934	PA1-4RT-BZ	2-3/8" Tenon Adapter for 4" Round Poles, Bronze
13937	PA1-5RT-BZ	2-3/8" Tenon Adapter for 5" Round Poles, Bronze
13935	PA1-4ST-BZ	2-3/8" Tenon Adapter for 4" Square Poles, Bronze
13938	PA1-5ST-BZ	2-3/8" Tenon Adapter for 5" Square Poles, Bronze

WB1 Wall Brackets

- Heavy duty wall Bracket Series
- Easily mount to a wall or square pole
- The pole mounted side bracket is excellent to light additional areas around a pole and when mounted to a wall it provides an alternative when light is required on a building
- Constructed from high grade steel to meet strict quality standards size and type.
- All feature 2 3/8" tenon
- 4", 5" and 9" 90°
- All brackets are bronze



ORDER CODE	ITEM #	DESCRIPTION
WALL BRACKETS		
13939	WB1-RT-BZ	Side Tenon Bracket, 5" Long Tenon, Bronze
13940	WB1-ST-BZ	Wall Mount Bracket , 4" Long Tenon, Bronze
13941	WB1-90RT-BZ	Wall Mount Bracket, 9" Right Angle Tenon, Bronze

Poles Round/Square

- Round or Square
- Steel or Aluminum
- Various sizes
- Reach out to your local contact for more details



POLE & WALL MOUNTS



DTD Dusk To Dawn

- 90% energy savings vs. traditional HID sources
- 13 years of maintenance-free operation with LED lifespan of 50,000 hours
- Instant-on with no warm-up, unlike HID
- Universal 120-277V photo control provides nighttime ON / daytime OFF
- Suitable for wall or pole mount applications



ORDER CODE	ITEM #	WATTS	CCT	NOMINAL LUMENS	EFFICACY (lm/W)	CRI	DIMMING	DLC ID#
								PREMIUM
12355	DTD/45W/7FCCT/UD/PC	45W	3000/4000/5000K	6247 lm	139 lm/W	>70	0-10V	✓
12351	DTD/47W/750/UD/PC	47W	5000K	5867 lm	125 lm/W	>70	0-10V	✓
12356	DTD/80W/7FCCT/UD/PC	80W	3000/4000/5000K	11,137 lm	139 lm/W	>70	0-10V	✓
12352	DTD/84W/750/UD/PC	84W	5000K	10,753 lm	128 lm/W	>70	0-10V	✓
12357	DTD/120W/7FCCT/UD/PC	120W	3000/4000/5000K	16,102 lm	134 lm/W	>70	0-10V	✓
12363	DTD/125W/750/UD/PC	125W	5000K	15,909 lm	127 lm/W	>70	0-10V	✓

Voltage U: 120- 277V

PT3 LED Pole Top

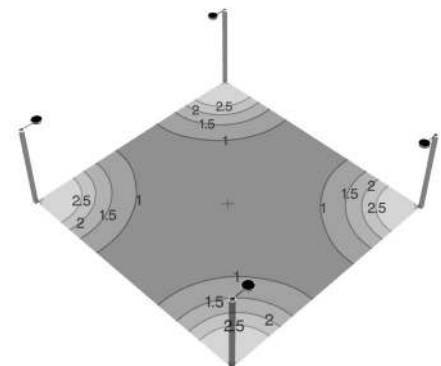
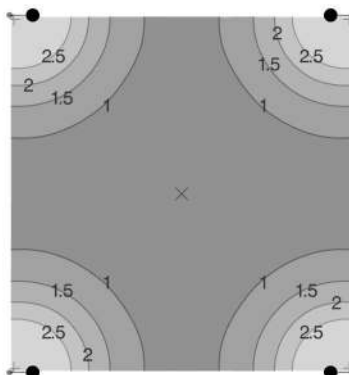
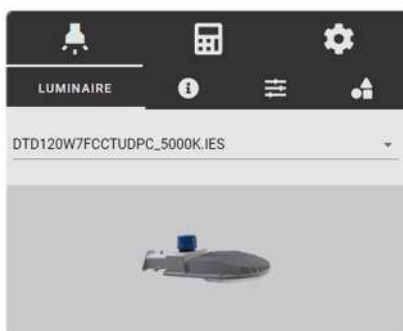
- Pole top luminaires with a modern twist from everyday pathway fixtures
- Controls Ready makes adding controls quick and easy. Includes screw-in receptacle for 3-pin twist-lock NEMA photocell receptacle with shorting cap included
- PowerSet feature allows for multiple lumen stops out of the box
- FieldCCeT features provides multiple color temperature settings in one fixture



ORDER CODE	ITEM #	WATTS	CCT	LUMENS	EFFICACY (lm/W)	TRADITIONAL WATTAGE EQUIVALENT	DLC ID#
							PREMIUM
801361	PT3-55GS-3	55/40/25W	3000/4000/5000K	7778/5834/3818 lm	145 lm/W	Up to 250W HID	PLPOG37YKJK
13123	PT3-100GS-3	100/80/60W	3000/4000/5000K	12,698/10,460/8124 lm	130 lm/W	Up to 320W HID	PL3R4W55UKFS
13124	PT3-150GS-3	150/125/100W	3000/4000/5000K	20,602/18,285/13,083 lm	144 lm/W	Up to 400W HID	PLSRE2DCL8U2

Voltage: 120-347V

FREE LIGHTING LAYOUT TOOL @ EIKO.COM





SIG Sport Light & High Bay

- Up to 104,000 lumens and 177 LPW efficiency
- Light weight for easy installation
- Multiple distributions available to optimize performance
- Optional visor and reflector help minimize light pollution
- Controls Ready
- Twist Lock (Z10) Receptacle simplifies adding controls
- 20kV surge protection standard



SPORTS LIGHTER

ORDER CODE	ITEM #	WATTS	CCT	NOMINAL LUMENS	EFFICACY (lm/W)	CRI	DIMMING	DLC ID#
								PREMIUM
12345	SIG/450W/740/UD	450W	4000K	76,185 lm	169 lm/W	>70	0-10V	✓
12346	SIG/450W/750/UD	450W	5000K	77,130 lm	171 lm/W	>70	0-10V	✓
12347	SIG/450W/740/VD	450W	4000K	79,600 lm	177 lm/W	>70	0-10V	✓
12348	SIG/450W/750/VD	450W	5000K	80,600 lm	179 lm/W	>70	0-10V	✓
12349	SIG/600W/740/UD	600W	4000K	98,750 lm	165 lm/W	>70	0-10V	✓
12350	SIG/600W/750/UD	600W	5000K	99,960 lm	167 lm/W	>70	0-10V	✓
12353	SIG/600W/740/VD	600W	4000K	130,200 lm	172 lm/W	>70	0-10V	✓
12358	SIG/600W/750/VD	600W	5000K	104,460 lm	174 lm/W	>70	0-10V	✓

Voltage U: 120-277V V: 277-480V

WARRANTY OPTIONS

MOST EIKO PRODUCTS COME WITH A 5 YEAR WARRANTY

LOOKING FOR AN EXTENDED WARRANTY? NO PROBLEM

OPTIONAL: 1, 5, 7, 10 YEAR LABOR

OPTIONAL: 7 OR 10 YEAR PARTS

COMBINE PARTS AND LABOR



FL Flood Light

- Low profile and versatile lightweight design
- Standard with yoke mount for easy out-of-the-box installation; ready for most applications
- Easily mounts to waterproof J-Box wall, pole, or tenon
- 0-10V Dimming
- Includes standard photocell for dusk-to-dawn functionality
- PowerSet feature allows for multiple "set and forget" lumen stops in each fixture
- FieldCCeT feature allows for multiple "set and forget" CCT options in each fixture



ORDER CODE	ITEM #	WATTS	CCT	LUMENS	EFFICACY (lm/W)	TRADITIONAL WATTAGE EQUIVALENT	DLC ID#
							PREMIUM
12334	FL1/30W/7FCCT/UD/Y/PC	30W	30/40/5000K	3900 lm	130 lm/W	Up to 70W HID	POTPXFV
12335	FL2/50W/7FCCT/UD/Y/PC	50W	30/40/5000K	6500 lm	130 lm/W	Up to 100W HID	PK21RMMQ
12336	FL3/100W/7FCCT/UD/Y/PC	100W	30/40/5000K	13000 lm	130 lm/W	Up to 250W HID	PYT8XY3W
12338	FL3/100W/750/UD/Y/PC	150/100/80W	30/40/5000K	19,500/13,000/10,400 lm	130 lm/W	Up to 360W HID	POTQ4SIX
12337	FL4/150W/750/UD/Y/PC	100W	5000K	13,000 lm	130 lm/W	Up to 250W HID	P0E2LV17
12339	FL4/PS150/7FCCT/UD/Y/PC	150W	5000K	19,500 lm	130 lm/W	Up to 360W HID	PMCUPYT8

Voltage U: 120-277V

BOX Flood Light

- Built in 7-Pin NEMA photocell receptacle
- Includes shorting cap
- PowerSet feature allows for multiple "set and forget" lumen stops in each fixture



ORDER CODE	ITEM #	WATTS	CCT	LUMENS	EFFICACY (lm/W)	TRADITIONAL WATTAGE EQUIVALENT	DLC ID#
							PREMIUM
12123	BOX1/PS150/750/UD/BZ	150/100/80/50W	5000K	21,000/15,500/12,500/8,200 lm	135 lm/W	Up to 400W HID	PBM2CYT9
12125	BOX1/PS150/750/VD/BZ	150/100/80/50W	5000K	21,000/15,450/12,600/8,250 lm	135 lm/W	Up to 400W HID	PJ35EFIT
12124	BOX2/PS300/750/UD/BZ	300/240/200/150W	5000K	41,300/35,500/29,600/22,9000 lm	135 lm/W	Up to 1000W HID	PGXUO3WH
12126	BOX2/PS300/750/VD/BZ	300/240/200/150W	5000K	41,600/35,400/29,600/23,000 lm	135 lm/W	Up to 1000W HID	PRPJ8SZ4

Voltage U: 120-277V, V: 277-480V





TWP1 Traditional Wall Pack

- Traditional style matches the appearance of legacy products while also covering the same footprint
- 4 - 1/2" knockouts makes for versatile mounting
- Wall mount with or without junction box
- Integrated photocell for dusk to dawn operation
- Hinged removable door housing makes installation easier
- Glass lens
- PowerSet feature allows for multiple lumen stops out of the box
- FieldCCeT features provides multiple color temperature settings in one fixture



ORDER CODE	ITEM #	WATTS	CCT	LUMENS	EFFICACY (lm/W)	TRADITIONAL WATTAGE EQUIVALENT	DLC ID #
							PREMIUM
13651	TWP1-PS45-40-U	45/35/25W	4000K	6075/4725/3375 lm	135 lm/W	Up to 100W HID	S-GNSMQI
13653	TWP1-PS45-50-U	45/35/25W	5000K	6075/4725/3375 lm	135 lm/W	Up to 100W HID	S-XVPLKT
13654	TWP1-PS45-FCCT-U	45/35/25W	3000/4000/5000K	6075/4725/3375 lm	135 lm/W	Up to 100W HID	S-GIEKB1
13656	TWP1-PS45-FCCT-H	45/35/25W	3000/4000/5000K	6075/4725/3375 lm	135 lm/W	Up to 100W HID	S-NPQ9IH
13667	TWP1-PS45-FCCT-V	45/35/25W	3000/4000/5000K	6075/4725/3375 lm	135 lm/W	Up to 100W HID	S-VGQ0EP
13657	TWP1-PS80-40-U	80/70/60W	4000K	10,800/9450/8100 lm	135 lm/W	Up to 250W HID	S-1AY8SC
13659	TWP1-PS80-50-U	80/70/60W	5000K	10,800/9450/8100 lm	135 lm/W	Up to 250W HID	S-SL830E
13658	TWP1-PS80-40-H	80/70/60W	5000K	10,800/9450/8100 lm	135 lm/W	Up to 250W HID	S-AQLWST
13660	TWP1-PS80-FCCT-U	80/70/60W	3000/4000/5000K	10,800/9450/8100 lm	135 lm/W	Up to 250W HID	S-YJKD61
13662	TWP1-PS80-FCCT-H	80/70/60W	3000/4000/5000K	10,800/9450/8100 lm	135 lm/W	Up to 250W HID	S-H54MS2
13661	TWP1-PS80-FCCT-V	80/70/60W	3000/4000/5000K	10,800/9450/8100 lm	135 lm/W	Up to 250W HID	S-SFYLEU
13663	TWP1-PS120-40-U	120/105/90W	4000K	16,200/14,175/12,150 lm	135 lm/W	Up to 400W HID	S-M163GK
13665	TWP1-PS120-50-U	120/105/90W	5000K	16,200/14,175/12,150 lm	135 lm/W	Up to 400W HID	S-G4CMLB
13666	TWP1-PS120-FCCT-U	120/105/90W	3000/4000/5000K	16,200/14,175/12,150 lm	135 lm/W	Up to 400W HID	S-V8SK5D
13668	TWP1-PS120-FCCT-H	120/105/90W	3000/4000/5000K	16,200/14,175/12,150 lm	135 lm/W	Up to 400W HID	S-B65CGK
13667	TWP1-PS120-FCCT-V	120/105/90W	3000/4000/5000K	16,200/14,175/12,150 lm	135 lm/W	Up to 400W HID	S-DB2EW6

Voltage U: 120-277V, H: 120-347V, V: 277-480V

SWP1 Slim Wall Pack

- Slim profile wallpack suitable for many applications
- 4 - 1/2" knockouts ensures easy installation
- Wall mount with or without junction box
- Integrated photocell for dusk-to-dawn operation; can be relocated to top or opposite side
- Internal level simplifies installation without the need for additional tools
- Hinged removable door housing makes installation easier
- Glass lens
- PowerSet feature allows for multiple lumen stops out of the box
- FieldCCeT features provides multiple color temperature settings in one fixture



ORDER CODE	ITEM #	WATTS	CCT	LUMENS	EFFICACY (lm/W)	TRADITIONAL WATTAGE EQUIVALENT	DLC ID #
							PREMIUM
13411	SWP1-PS60-FCCT-U	60/45/30W	3000/4000/5000K	8100/6075/4050 lm	135 lm/W	Up to 150W HID	S-UHSIW1
13410	SWP1-PS120-FCCT-U	120/100/80W	3000/4000/5000K	16,200/13,500/10,800 lm	135 lm/W	Up to 400W HID	S-FHM0N3

Voltage U: 120-277V

WALL PACKS



WALL PACKS



MWP1

Distributes light in between the forward throw and full cutoff. Keeps light from being distributed too far from the mounting area making it ideal for lighting medium sized areas.

WFC1

Distributes light downward and focuses on a specific area. Prevents light from shining up towards the sky. Ideal for illuminating small to medium sized areas.

WPA1

Light can be adjusted from 0-90° allowing it to act as a forward and semi-cutoff.

WESTPORT

Distributes light directly up or down

Intended for small areas and used to focus an architectural designs.

MWP1 Mini Wall Pack

- Designed for general purpose wall mount lighting
- Compact design
- 2 - 1/2" knockouts makes for versatile mounting
- Integrated photocell that can easily be disabled in the field
- PowerSet feature allows for multiple lumen stops out of the box
- FieldCCeT features provides multiple color temperature settings in one fixture



ORDER CODE	ITEM #	WATTS	CCT	LUMENS	EFFICACY (lm/W)	TRADITIONAL WATTAGE EQUIVALENT	DLC ID #
							PREMIUM
13930	MWP1-PS30-FCCT-U	30/20/15W	3000/4000/5000K	4050/2700/2025 lm	135 lm/W	70W HID	S-1TJCWL

Voltage U: 120-277V

WFC1 Full Cutoff Wall Pack

- Full cutoff optics to reduce glare, light pollution and improve visibility
- Hinged junction box makes installation and maintenance easier
- Multiple knockouts available for various installations
- Leveling made easy with internal level
- PowerSet feature allows for multiple "set and forget" lumen stops in each fixture
- FieldCCeT feature allows for multiple "set and forget" CCT options in each fixture



ORDER CODE	ITEM #	WATTS	CCT	LUMENS	EFFICACY (lm/W)	TRADITIONAL WATTAGE EQUIVALENT	DLC ID #
							PREMIUM
13461	WFC1-PS70-FCCT-H	70/60/45W	3000/4000/5000K	9100/7800/5850 lm	130 lm/W	Up to 250W HID	S-5AQYOW
14557	WFC1-PS70-30-H*	70/60/45W	3000K	9100/7800/5850 lm	130 lm/W	Up to 250W HID	S-FX46E2

*Meets DLC Luna

Voltage H: 120-347V



WPA1 Wall Pack Adjustable

- Adjustable from 0 to 90°
- Integrated photocell that can easily be disabled in the field
- 4 - 1/2" knockouts
- PowerSet allows for multiple "set and forget" lumen stops in each fixture
- FieldCCeT allows for multiple "set and forget" CCT setpoints in each fixture



ORDER CODE	ITEM #	WATTS	CCT	LUMENS	EFFICACY (lm/W)	TRADITIONAL WATTAGE EQUIVALENT	DLC ID #	
								PREMIUM
13925	WPA1-PS30-FCCT-U	30/20/12W	3000/4000/5000K	4230/2820/1692 lm	141 lm/W	100W-150W HID		S-N51JLW
13926	WPA1-PS30-FCCT-H	30/20/12W	3000/4000/5000K	4140/2760/1656 lm	138 lm/W	100W-150W HID		S-JQK1EY
13928	WPA1-PS80-FCCT-H	80/65/50W	3000/4000/5000K	11,520/9360/7200 lm	144 lm/W	Up to 250W HID		S-A5042M
13927	WPA1-PS80-FCCT-U	80/65/50W	3000/4000/5000K	11,440/9295/7150 lm	143 lm/W	Up to 250W HID		S-WIDL FH

Voltage U: 120-277V, H: 120-347V

WESTPORT Cylinder Wall Sconce, Cylinder Surface Mount

- Provides comfortable diffused light
- Switchable array to conveniently funnel light up, down or both up and down
- Simultaneously (CWSP models only)
- Integrated photocell ON/OFF switch to easily disable photo control based on installation needs (CWSP & CWSW 6" models only)



ORDER CODE	ITEM #	SIZE	WATTS	CCT	LUMENS	CRI	PHOTO CELL	FINISH	WET/DRY LOCATION	BEAM	ENERGY STAR
12547	CWSP3S/10W/8CCT3/UNV/PC/BK	3"	5/10W	30/40/5000K	800 lm	>80	✓	Black	Wet	50°	★
12548	CWSP3S/10W/8CCT3/UNV/PC/BZ	3"	5/10W	30/40/5000K	800 lm	>80	✓	Bronze	Wet	50°	★
12549	CWSP4S/20W/8CCT3/UNV/PC/BK	4"	10/20W	30/40/5000K	1600 lm	>80	✓	Black	Wet	50°	★
12550	CWSP4S/20W/8CCT3/UNV/PC/BZ	4"	10/20W	30/40/5000K	1600 lm	>80	✓	Bronze	Wet	50°	★
12526	CWSP6S/36W/8CCT3/UNV/PC/BK	6"	18/36W	30/40/5000K	3600 lm	>80	✓	Black	Wet	80°	★
12527	CWSP6S/36W/8CCT3/UNV/PC/BZ	6"	18/36W	30/40/5000K	3600 lm	>80	✓	Bronze	Wet	80°	★
12528	CSMWP6S/30W/8CCT3/UNV/DIM/BK	6"	30W	30/40/5000K	3000 lm	>80		Black	Dry	80°	★
12551	CSMWP6S/30W/8CCT3/UNV/DIM/BK	6"	30W	30/40/5000K	3000 lm	>80		Bronze	Dry	80°	★

Voltage U: 120-277V





PG1 Parking Garage Fixture

- Architectural modern style garage and canopy
- Controls Ready makes adding controls quick and easy. Includes screw-in receptacle for Standalone sensors or Networked Lighting Controls
- Hinged junction box makes installation and maintenance easier
- Four 1/2" Knockouts (one on each side) plus one 3/4" on the top; one 12mm predrill hole for battery backup test button.
- PowerSet feature allows for multiple lumen stops out of the box
- FieldCCeT features provides multiple color temperature settings in one fixture



ORDER CODE	ITEM #	WATTS	CCT	LUMENS	EFFICACY (lm/W)	TRADITIONAL WATTAGE EQUIVALENT	DLC ID#	
							PREMIUM	
13464	PG1-PS45-FCCT-H	45/35/25W	4000/5000K	6300/4900/3500 lm	140 lm/W	Up to 100W HID	S-1JL9QK	
13463	PG1-PS90-FCCT-H	90/75/60W	4000/5000K	12,600/10,500/8400 lm	140 lm/W	Up to 200W HID	S-WNE32K	

Voltage H: 120-347V

SCS Surface Canopy Square

- Quick mount design simplifies installation
- Standard Z10 receptacle simplifies adding controls
- Low profile is ideal in applications with low mounting heights
- PowerSet feature allows for multiple "set and forget" lumen stops
- Up to 150 LPW ultra-high efficiency delivers superior performance
- Optional field installed "garage" lens, optimizes the light distribution for garage applications
- Optional recessed version allows SCS to be installed flush to ceilings, soffits, and over hangs.



ORDER CODE	ITEM #	WATTS	CCT	NOMINAL LUMENS	CRI	DIMMING	REPLACES	FINISH	DLC ID#	
									PREMIUM	
11521	SCS/PS60/840/UD	60/40/25W	4000K	7400/5200/3350 lm	>80	0-10V	125W-250W	Bronze	✓	
11522	SCS/PS60/850/UD	60/40/25W	5000K	7400/5200/3350 lm	>80	0-10V	125W-250W	Bronze	✓	
11523	SCS/70W/840/UD	70W	4000K	9725 lm	>80	0-10V	250W-320W	Bronze	✓	
11684	SCS/70W/850/UD	70W	5000K	9725 lm	>80	0-10V	250W-320W	Bronze	✓	
12591	SCS/PS60/840/UD/W	60/40/25W	4000K	7400/5200/3350 lm	>80	0-10V	125W-250W	White	✓	
12592	SCS/PS60/850/UD/W	60/40/25W	5000K	7400/5200/3350 lm	>80	0-10V	125W-250W	White	✓	
12593	SCS/70W/840/UD/W	70W	4000K	9725 lm	>80	0-10V	250W-320W	White	✓	
12594	SCS/70W/850/UD/W	70W	5000K	9725 lm	>80	0-10V	250W-320W	White	✓	

Voltage U: 120-277V

SCS-R Surface Canopy Square - Recessed

- Recessed mount design allows SCS to be installed flush to ceilings, soffits, and overhangs
- Low mounted profile is ideal for applications with low ceiling heights
- Up to 139 lm/W ultra-high efficiency delivers superior performance
- PowerSet feature allows for multiple lumen stops out of the box
- Controls Ready; easily add Standalone sensors or Network Lighting Controls using integrated Z10 receptacle
- Optional field installed "garage" lens, optimizes the light distribution for garage applications



ORDER CODE	ITEM #	WATTS	CCT	LUMENS	EFFICACY (lm/W)	FINISH	TRADITIONAL WATTAGE EQUIVALENT	DLC ID#	
								FUEL PUMP CANOPY	PARKING GARAGE
13197	SCS/PS60/840/UD/W/R	60/40/25W	4000K	7400/5200/3350 lm	123 lm/W	White	125W-250W	PT2HYRBQ	P54E3069
13322	SCS/PS60/850/UD/W/R	60/40/25W	5000K	7400/5200/3350 lm	123 lm/W	White	125W-250W	P5VUJ191	PLKXKBPR
13316	SCS/70W/840/UD/W/R	70W	4000K	9725 lm	139 lm/W	White	250W-320W	PPMKUFEC	PAEXKIJJE
13318	SCS/70W/850/UD/W/R	70W	5000K	9725 lm	139 lm/W	White	250W-320W	POWNK4XE	PP3YDWCS

Voltage U: 120-277V



VP3 Vapor Proof Linear Fixture

- Easily add a behind the lens standalone control solution; minimal wiring required
- Available in 2', 4' and 8' lengths Compatible with factory installed battery backups
- V-hooks and surface mounting clips included
- Stainless steel clips
- Cable gland included for sealing power cable entry, knockout plug accessory available
- 2 1/2" knockouts, one on each end
- Frosted polycarbonate lens eliminates glare
- PowerSet feature allows for multiple lumen stops out of the box
- FieldCCeT features provides multiple color temperature settings in one fixture



ORDER CODE	ITEM #	SIZE	WATTS	CCT	LUMENS	EFFICACY (lm/W)	TRADITIONAL WATTAGE EQUIVALENT	DLC ID #	
								STANDARD	PREMIUM
13737	VP3-2PS25-FCCT-H	2'	25/20/15W	3500/4000/5000K	3500/2800/2100 lm	140 lm/W	2 lamp 17W T8	S-D8A4RJ	S-UOJNMH
13738	VP3-4PS45-40-H	4'	45/35/26W	4000K	6300/4900/3640 lm	140 lm/W	2 lamp 32W T8	S-KDAO72	S-ELAYX5
13740	VP3-4PS45-50-H	4'	45/35/26W	5000K	6300/4900/3640 lm	140 lm/W	2 lamp 32W T8	S-BJ1YKC	S-1JXMA6
13742	VP3-4PS45-FCCT-H	4'	45/35/26W	3500/4000/5000K	6300/4900/3640 lm	140 lm/W	2 lamp 32W T8	S-BFGZNW	S-T3JXU7
13744	VP3-4PS65-FCCT-H	4'	65/60/55W	3500/4000/5000K	9100/8400/7700 lm	140 lm/W	3 Lamp 32W T8	S-RPQ9B6	S-97CS5L
13746	VP3-8PS90-40-H	8	90/75/65W	4000K	12,600/10,500/9100 lm	140 lm/W	4 Lamp 32W T8	S-5X17RL	S-LY5NCZ
13748	VP3-8PS90-50-H	8'	90/75/65W	5000K	12,600/10,500/9100 lm	140 lm/W	4 Lamp 32W T8	S-VYLZH1	S-0M7YQ9
13750	VP3-8PS90-FCCT-H	8'	90/75/65W	3500/4000/5000K	12,600/10,500/9100 lm	140 lm/W	4 Lamp 32W T8	S-4GRZSL	S-I50R3N

Voltage H: 120-347V

VPHB1 Vapor Proof High Bay

- Designed to be used in environments subject to high levels of moisture and dust
- Multiple knockouts make installation flexible and easy
- Stainless steel clips
- Cable gland included for sealing power cable entry, knockout plug accessory available
- Frosted polycarbonate lens eliminates glare
- Surface or chain mount



ORDER CODE	ITEM #	SIZE	WATTS	CCT	LUMENS	EFFICACY (lm/W)	TRADITIONAL WATTAGE EQUIVALENT	DLC ID #	
								STANDARD	PREMIUM
13125	VPHB1-41504-3	4'	150W	4000K	19,848 lm	132 lm/W	6 lamp 32W T8 or 4 lamp T5 HO	PEF9J9QO	
13126	VPHB1-41505-3	4'	150W	5000K	20,223lm	133 lm/W	6 lamp 32W T8 or 4 lamp T5 HO	PNFEARSM	
313971	VPHB1-42004-3	4'	200W	4000K	30,392 lm	147 lm/W	6 lamp T5 HO	PT1CAW6T	
800249	VPHB1-42005-3	4'	200W	5000K	31,259 lm	150 lm/W	6 lamp T5 HO	PZVCSF53	

Voltage H: 120-347V

VTU LED Vapor Tight Utility

- Die-cast aluminum construction
- Adjustable for wall or ceiling mount
- Frosted glass lens minimizes glare



ORDER CODE	ITEM #	WATTS	CCT	LUMENS	CRI	ENERGY STAR
10744	VTU-8/8W/830-U-GY	8W	3000K	800 lm	80+	★
10745	VTU-8/8W/840-U-GY	8W	4000K	800 lm	80+	★
10746	VTU-8/8W/850-U-GY	8W	5000K	800 lm	80+	★
10650	VTU-20/20W/830-U-GY	20W	3000K	2000 lm	80+	★
10651	VTU-20/20W/840-U-GY	20W	4000K	2000 lm	80+	★
10652	VTU-20/20W/850-U-GY	20W	5000K	2000 lm	80+	★

Voltage U: 120-277V



EXIT Emergency

- Easy to install
- Long battery life
- Environmentally friendly
- Energy saving
- Single and double-sided installation
- Wall and ceiling mountable



RoHS Compliant



ORDER CODE	ITEM #	LUMENS	DISCRIPTION
11033	EXIT-R-W	100 lm	Exit Sign Red White Housing
11034	EXIT-G-W	100 lm	Exit Sign Green White Housing
11037	EXIT/EM-R-W	100 lm	Exit Sign Red with Emergency Light White Housing
11038	EXIT/EM-G-W	100 lm	Exit Sign Green with Emergency Light White Housing
11039	EXIT/EM-R-BK	100 lm	Exit Sign Red with Emergency Light Black Housing
11040	EXIT/EM-G-BK	100 lm	Exit Sign Green with Emergency Light Black Housing
11041	EML-W	100 lm	Emergency Light White Housing
11042	EML-BK	100 lm	Emergency Light Black Housing

Voltage: 120-277V

ES2 Emergency

- Swing type housing rotates from 0 to 180 degrees for precise positioning, ideal for sloped ceilings
- Universal input voltage from 120-347VAC and 6-24VDC
- Constructed of durable die-cast aluminum
- Status is easily determined via an LED indicating AC-ON
- Even light output with a high uniformity
- 7.0 cd/m2 light output
- Includes 3 pictogram inserts
- For use with DC power back-up systems
- Suitable for single and double-sided applications



RoHS Compliant



ORDER CODE	ITEM #	LUMENS	DISCRIPTION
313416	ES2-BU1SC30B-3	260 lm	Steel Battery Unit, 30W, 2-Heads, Remote Capable, 120-347V, 6VDC
313766	ES2-BU1SC72B-3	260 lm	Steel Battery Unit, 72W, 2-Heads, Remote Capable, 120-347V, 12VDC
313417	ES2-BU2SC30B-3	260 lm	Curved Steel Battery Unit, 30W, 2-Heads, Remote Capable, 120-347V, 6VDC
313424	ES2-RC1PC6B-3	260 lm	Thermoplastic RM Exit Sign Combo, 6W, 2-Heads, Battery Back-Up, 120-347V
313425	ES2-RC1PC30B-3	260 lm	Steel RM Exit Sign Combo, 30W, 2-Heads, Battery Back-up, Remote Capable, 120-347V
313764	ES2-RH1PC14-6	260 lm	Emergency Light, 14W, Remote Double LED Heads, Plastic Case, White, 6-12VDC
313426	ES2-RH1PC2-6	260 lm	Single Remote Head, 2W, Thermoplastic, 6-12VDC
313427	ES2-RH1PC4-6	260 lm	Double Remote Head, 4W, Thermoplastic, 6-12VDC
313765	ES2-RH1PC7-6	260 lm	Single Remote Head, 7W, Thermoplastic, 6VDC, 6-12VDC
313422	ES2-RM1EL2B-3	260 lm	Edge Lit RM Exit Sign, 2W, Battery Back-Up, 120-347V
313423	ES2-RM1EL2U-3	260 lm	Edge Lit RM Exit Sign, 2W, 120-347V UDC, 6-24VDC
313418	ES2-RM1PC2B-3	260 lm	Thermoplastic RM Exit Sign, 2W, Battery Back-Up, 120-347V
313419	ES2-RM1PC2U-3	260 lm	Thermoplastic RM Exit Sign, 2W, 120-347V UDC, 6-24VDC
313420	ES2-RM1SC2B-3	260 lm	Steel RM Exit Sign, 2W, Battery Back-Up, 120-347V
313421	ES2-RM1SC2U-3	260 lm	Steel RM Exit Sign, 2W, 120-347V UDC, 6-24VDC
313504	ES2-RM2EL2B-3	260 lm	Edge Lit Swing RM Exit Sign, 2W, Battery Back-Up, 120-347V
313524	ES2-RM2EL2U-3	260 lm	Edge Lit Swing RM Exit Sign, 2W, 120-347V UDC, 6-24VDC

Voltage 120-347VAC and 6-24VDC



SEN Standalone Controls

- Microwave or PIR options
- Installation Type: Push-in, Twist Lock, Screw-in, Snap-in
- These sensors are used to automatically turn the lights on when occupancy is detected and off when there is no occupancy detected
- Field adjustable settings included: brightness (high-end trim), dim level, sensitivity, hold time, and dim time for customized lighting control
- Dual ambient and daylight sensing technology improves accuracy in outdoor applications when the sensor is within the range of artificial light emitted from the fixture, resulting in a more energy-efficient and reliable lighting system
- Daylight harvesting for energy efficiency
- Occupancy detection can be disabled, and the sensor can function as a photocell alone
- Photocell function can be used as traditional dusk-to-dawn or two-stage dimming/midnight dimming
- All standalone control solutions are commissioned using commissioning tool (sold separately)



STANDALONE



ORDER CODE	ITEM #	SENSOR TECHNOLOGY	DAYLIGHT HARVESTING	DIMMING	MOUNTING HEIGHT	INSTALLATION TYPE
13696	SENA-SHMR	Microwave	Yes	0-10V	8-20ft	Push-in



ORDER CODE	ITEM #	SENSOR TECHNOLOGY	DAYLIGHT HARVESTING	DIMMING	MOUNTING HEIGHT	INSTALLATION TYPE
13341	SEN5A-SZMR-WH	Microwave	YES	0-10V	8-40ft	Z10, Twist Lock



ORDER CODE	ITEM #	SENSOR TECHNOLOGY	DAYLIGHT HARVESTING	DIMMING	MOUNTING HEIGHT	INSTALLATION TYPE
13342	SEN5A-SZPR-WH	PIR	YES	0-10V	8-40ft	Z10, Twist Lock



ORDER CODE	ITEM #	SENSOR TECHNOLOGY	DAYLIGHT HARVESTING	DIMMING	MOUNTING HEIGHT	INSTALLATION TYPE
13859	SEN5A-SPMR-WH	Microwave	YES	0-10V	8-40ft	Screw-in



ORDER CODE	ITEM #	SENSOR TECHNOLOGY	DAYLIGHT HARVESTING	DIMMING	MOUNTING HEIGHT	INSTALLATION TYPE
13861	SEN5A-SPPR-WH	PIR	YES	0-10V	8-40ft	Screw-in



ORDER CODE	ITEM #	SENSOR TECHNOLOGY	DAYLIGHT HARVESTING	DIMMING	MOUNTING HEIGHT	INSTALLATION TYPE
14916	SEN5A-SPCR-WH	Photocell	NO	0-10V	N/A	Screw-in



ORDER CODE	ITEM #	SENSOR TECHNOLOGY	DAYLIGHT HARVESTING	DIMMING	MOUNTING HEIGHT	INSTALLATION TYPE
13697	SENA-SHPR	PIR	YES	0-10V	8-12ft	Snap-in

WHY CHOOSE EIKO'S STANDALONE CONTROLS



Commissioned Using SEN5A-ACT





NLC Networked Lighting Controls

- Eiko' Networked Lighting Controls includes fixture controllers with sensor (the sensor can be disabled) and controllers (aka switches for personal control)
- The free iOS or Android App powered by Silvar is used for onsite commissioning which includes setting up areas/grouping/zoning, creating profiles which includes setting high and low end trim, occupancy or vacancy, daylight harvesting, ambient threshold (Photozell), time delay, as well as personal control
- The Web App powered by Silvar is used for optional offsite pre-planning which includes setting up areas/grouping/zoning (pre-commissioning not required) and creating profiles (includes setting high and low end trim, occupancy or vacancy, daylight harvesting and time delay)
- No hubs, gateway, or routers are required to make a complete mesh network.
- Easily incorporate additional BLE devices like optional gateway, range extenders, and timekeepers



ORDER CODE	ITEM #	SENSOR TECHNOLOGY	DAYLIGHT HARVESTING	WIRELESS TECHNOLOGY	DIMMING	MOUNTING HEIGHT	COMMUNICATION RANGE*	INSTALLATION TYPE
13246	SENA-WZPA-WH	PIR	Yes	Bluetooth® SIG Mesh	0-10V	8-40ft	200ft	Z10, twist lock



ORDER CODE	ITEM #	SENSOR TECHNOLOGY	DAYLIGHT HARVESTING	WIRELESS TECHNOLOGY	DIMMING	MOUNTING HEIGHT	COMMUNICATION RANGE*	INSTALLATION TYPE
13865	SENA-WPPA-WH	PIR	Yes	Bluetooth® SIG Mesh	0-10V	8 - 40ft	200FT	Screw-in



ORDER CODE	ITEM #	SENSOR TECHNOLOGY	DAYLIGHT HARVESTING	WIRELESS TECHNOLOGY	DIMMING	MOUNTING HEIGHT	COMMUNICATION RANGE*	INSTALLATION TYPE
13245	SENA-WHPA	PIR	Yes	Bluetooth® SIG Mesh	0-10V	8 - 12ft	49-65ft	Snap-in



ORDER CODE	ITEM #	SENSOR TECHNOLOGY	DAYLIGHT HARVESTING	WIRELESS TECHNOLOGY	DIMMING	MOUNTING HEIGHT	COMMUNICATION RANGE*	INSTALLATION TYPE
13359	SENA-WCPA	PIR	Yes	Bluetooth® SIG Mesh	0-10V	8 - 12ft	Max 82ft	Ceiling Mount, 4-Pin



ORDER CODE	ITEM #	SENSOR TECHNOLOGY	WIRELESS TECHNOLOGY	# OF BUTTONS	COMMUNICATION RANGE*	INSTALLATION TYPE
12654	ESRPB-W-EO	Wireless Controller (no sensor)	Bluetooth® SIG Mesh	2-Button	32.8ft	Wireless, Self-Powered



ORDER CODE	ITEM #	SENSOR TECHNOLOGY	WIRELESS TECHNOLOGY	# OF BUTTONS	COMMUNICATION RANGE*	INSTALLATION TYPE
12655	EDRPB-W-EO	Wireless Controller (no sensor)	Bluetooth® SIG Mesh	4-Button	32.8ft	Wireless Self-Powered



ORDER CODE	ITEM #	SENSOR TECHNOLOGY	WIRELESS TECHNOLOGY	# OF BUTTONS	COMMUNICATION RANGE*	INSTALLATION TYPE
12635	PSC-DM-WS-100-BLE-SR	Wall Controller	Bluetooth® SIG Mesh	Single Rocker with Slice Bar	30ft	Wired Electrical Box



ORDER CODE	ITEM #	SENSOR TECHNOLOGY	WIRELESS TECHNOLOGY	# OF BUTTONS	COMMUNICATION RANGE*	INSTALLATION TYPE
12636	PSC-DM-I-WS-100-BLE-SR	PIR Wall Controller	Bluetooth® SIG Mesh	Single Rocker with Slice Bar	30ft	Wired Electrical Box



ORDER CODE	ITEM #	SENSOR TECHNOLOGY	WIRELESS TECHNOLOGY	# OF BUTTONS	COMMUNICATION RANGE*	INSTALLATION TYPE
12637	PSC-DM WS-400-BLE-SR	Wall Controller	Bluetooth® SIG Mesh	4-Button	30ft	Wired Electrical Box



NLC Networked Lighting Controls Cont'd



ORDER CODE	ITEM #	SENSOR TECHNOLOGY	WIRELESS TECHNOLOGY	DIMMING	COMMUNICATION RANGE*	INSTALLATION TYPE
13234	SGW-101	Silvair Gateway	Bluetooth® SIGMesh	---	---	---



ORDER CODE	ITEM #	SENSOR TECHNOLOGY	WIRELESS TECHNOLOGY	DIMMING	COMMUNICATION RANGE*	INSTALLATION TYPE
12993	PSC-TKP-200-BLE-SR	Timekeeper and Range Extender	Bluetooth® SIG Mesh	Bi-Level	Max 800ft	Wired Electrical Box



ORDER CODE	ITEM #	SENSOR TECHNOLOGY	WIRELESS TECHNOLOGY	DIMMING	COMMUNICATION RANGE*	INSTALLATION TYPE
12994	PSC-RET-100-BLE-SR	Wireless Controller	Bluetooth® SIG Mesh	Bi-Level	800ft	Wired Electrical Box



ORDER CODE	ITEM #	SENSOR TECHNOLOGY	WIRELESS TECHNOLOGY	DIMMING	COMMUNICATION RANGE*	INSTALLATION TYPE
12634	PSC-WCM-450-BLE-SR	Wireless Controller	Bluetooth® SIG Mesh	0-10V	Max 100ft	Wired Electrical Box

WIRELESS

WHY CHOOSE EIKO'S NLC SOLUTION

- Uses Bluetooth® Low Energy (BLE) mesh for greater communication range and more networked devices
- No hubs, routers or gateways* required
- Fast data transfer, resilient radio
- Scalable to thousands of devices
- No restriction on the number of groups or zones
- Reconfigures when nodes are added or when individual nodes fail
- Part of the Bluetooth® Special Interest Group (SIG), and powered by Silvair, ensuring security and device interoperability
- EIKO's NLC Devices are DesignLights Consortium (DLC) approved through Silvair

***GATEWAY OPTIONAL:**

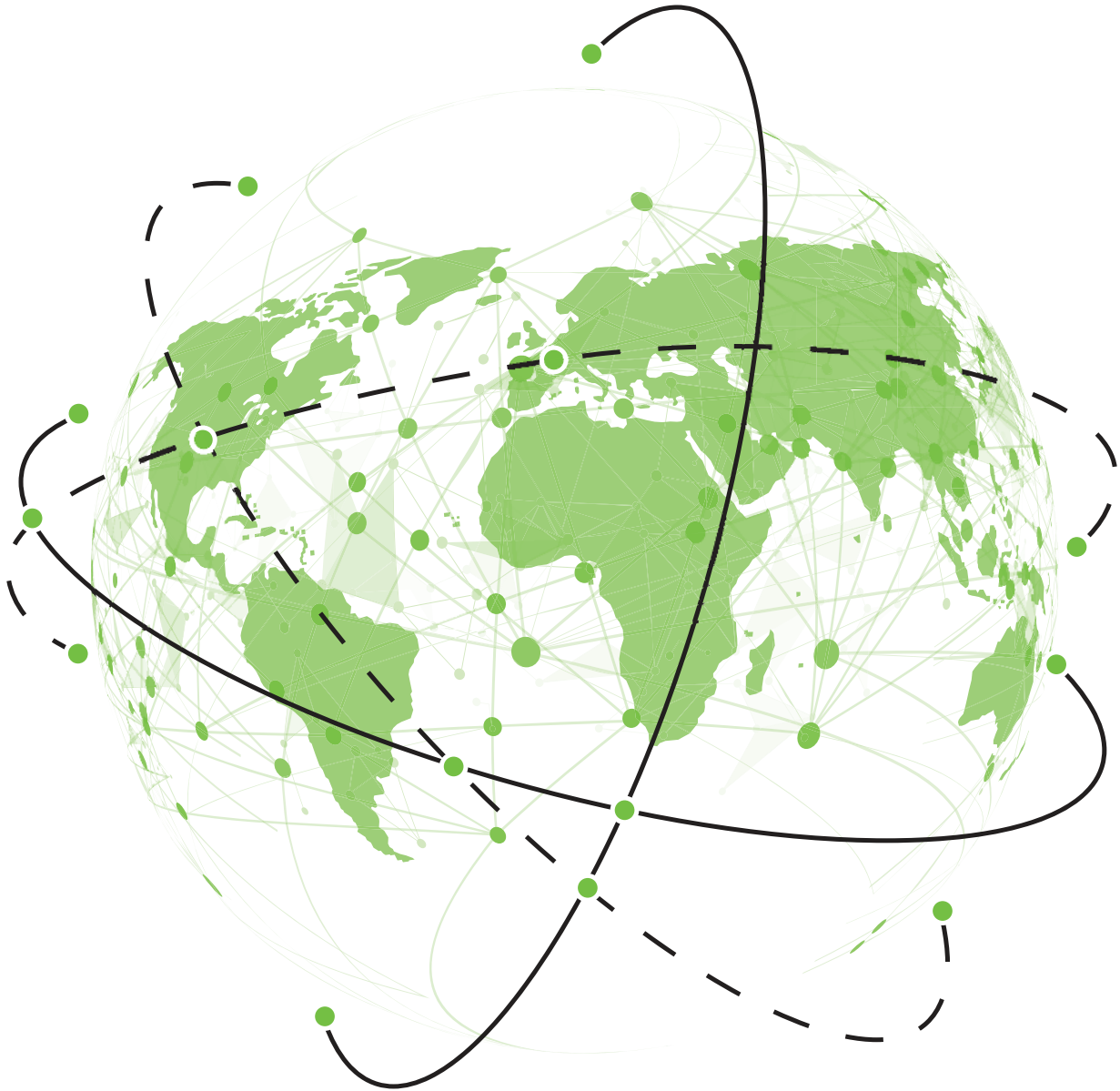
Used for additional features: detailed scheduling and energy monitoring

Commissioned Using Silvair App
Available for iOS or Android

Powered by:
SILVAIR



SIMPLY EIKO.



WORLD HQ: 18000 W. 105th St, Olathe, KS 66061 1.800.852.2217
CANADA HQ: 7900 Goreway Dr. Unit 8, Brampton, ON L6T 5W6 1.888.741.2673
LEDCAT 01/2024

